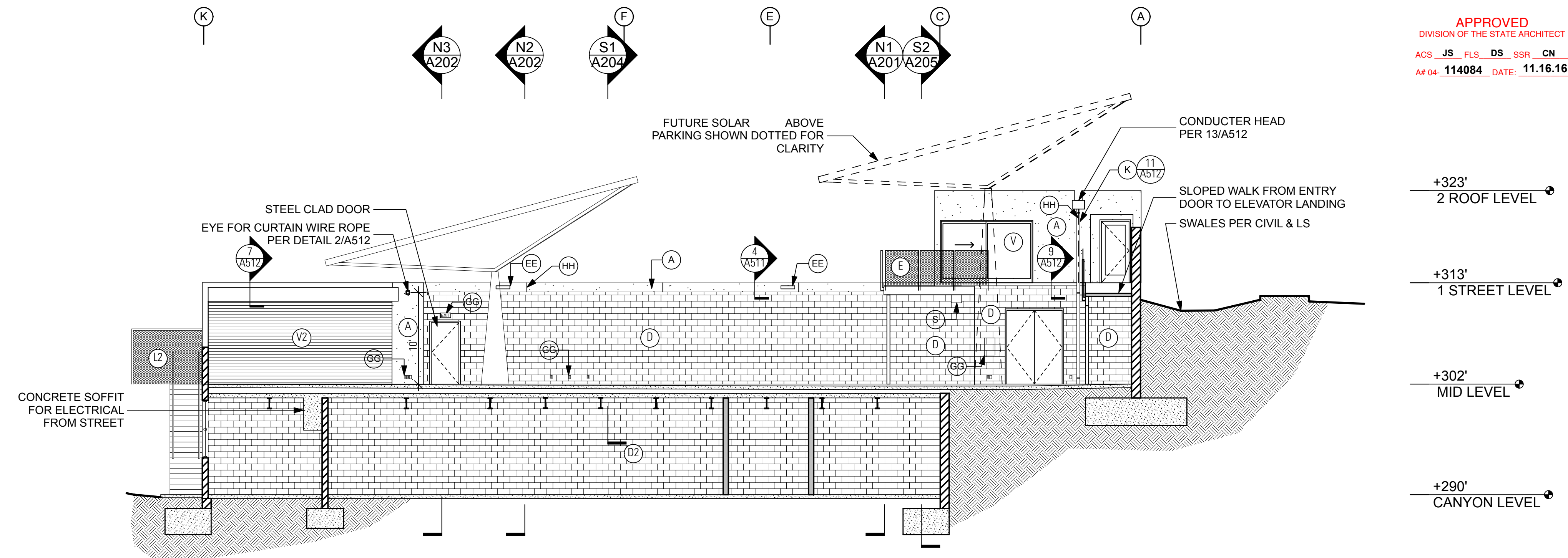


E1 ELEVATION / SECTION VIEWED FROM EAST 1/8" = 1'-0"



E2 EAST FACING ELEVATION/SECTION 1/8" = 1'-0"

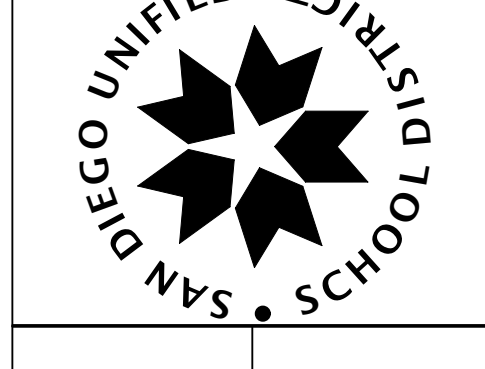
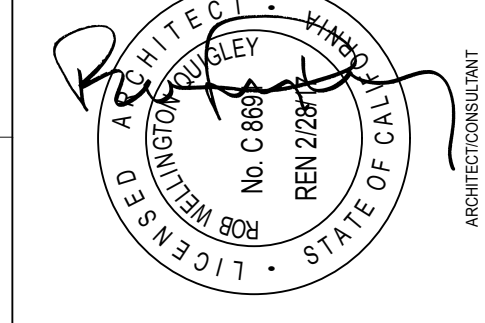
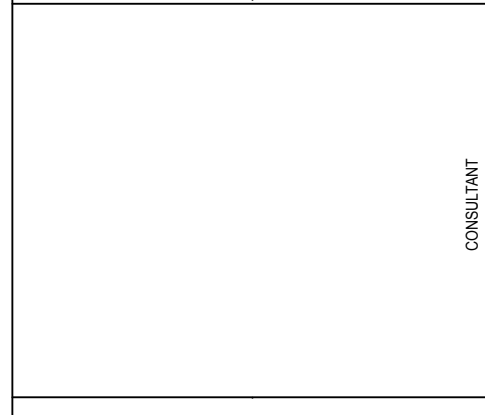
(A) STUCCO:	LIGHT DASH FINISH PAINT: DUNN EDWARDS DEA 116 "FLASH OF ORANGE"	(E1) GUARDRAIL:	DETAIL AS NOTED. PAINT: DUNN EDWARDS DE6385 BLACK BEAN	(L2) CHAIN FENCE:	CHAIN LINK PER LANDSCAPE DETAILS 2&3/L.11	(U1) WINDOW:	METAL CLAD, NAIL ON FIN. COLOR: BRONZE OKALUX GLASS. SEE WINDOW SCHEDULE	(AA) EXPOSED STRUCTURE:	PER STRUCTURAL. @ EXTERIOR GALVANIZED AND PAINT AS NOTED IN ELEVATIONS/DETAILS
(A1) STUCCO:	LIGHT DASH FINISH PAINT: DE6385 BLACK BEAN	(E2) HANDRAIL:	DETAIL AS NOTED. PAINT: DE6385 BLACK BEAN	(M) TRELLIS:	DETAILS AS NOTED. PAINT: DUNN EDWARDS DEA111 BURNING TOMATO	(U2) WINDOW:	METAL CLAD, NAIL ON FIN. COLOR: BRONZE OBSCURE GLASS. SEE WINDOW SCHEDULE	(BB) CONCRETE BENCH:	CAST CONCRETE - TROWELED FINISH PER SPECS
(B) CONCRETE:	VERTICAL BOARD FORM ON EXTERIOR W/ CLEAR MATTE GRAFFITI COATING SHOTCRETE ON INTERIOR W/ HEAVY TEXTURE. CLEAR, MATTE SEALER GRAFFITI COATING	(F) ROOF FRAMING:	EXPOSED ROOF JOISTS & SHEATHING STAIN: SHERWIN WILLIAMS SW7103 WHITETAIL	(N) MAST:	6" DIA. STEEL POSTS. GALVANIZED FINISH FOR FUTURE WEATHER STATION	(V) SLIDING GLASS DOOR:	SEE DOOR SCHEDULE	(CC) TUBE OUTLET COVER:	
(C) STONE:	RIVERROCK STONE VENEER. SEE 14/A501	(G) ASPHALT SHINGLES:	COLOR: DARK GREY	(O) CERAMIC TILE:	DONOR'S TILES	(V1) GATE:	SEE DOOR SCHEDULE	(DD) WINDOW LIGHT SHELF:	SEE DETAIL 1&5/A512 GALVANIZED FINISH
(D) CMU:	FLUSH JOINTS, PRIMED PAINTED	(H) METAL SIDING:	SHEET METAL. PAINT TO MATCH WINDOW FINISH. SEE 11/A501 TYP.	(P) WIRE PARTITION SYSTEM:	INSTALL PER MANUF. & 3/A513. FINISH: STL-GALV	(V2) ROLL-UP GATE:	SEE DOOR SCHEDULE	(EE) LIGHTING:	SEE ELECTRICAL PLANS
(D1) CMU:	RAKED JOINTS. SEALED	(J) GUTTER:	DETAILS AS NOTED. PAINTED TO MATCH STUCCO	(R) TUBE SKYLIGHT:	SOLATUBE. SEE WINDOW SCHEDULE	(W) TRIM PAINT RED:	PAINT: DUNN EDWARDS DEA111 BURNING TOMATO	(FF) CORNER GUARD:	SEE DETAIL 15/A510
(D2) CMU:	CONCAVE JOINT. UNFINISHED	(K) DOWNSPOUT:	DETAILS AS NOTED. FINISH: STL-PNT-1	(R1) SKYLIGHT:	KALWALL. SEE WINDOW SCHEDULE	(W1) TRIM PAINT DARK:	PAINT: DUNN EDWARDS DE6385 BLACK BEAN	(GG) ELECTRICAL:	SEE ELECTRICAL PLANS
(E) GUARDRAIL:	METAL FRAME W/ EXPANDED METAL LATH INFILL. SEE 3/A503, TYP. & AS NOTED. ENTIRE RAIL TO BE GALVANIZED	(L1) FENCE:	1" DIA GALV FENCE, DETAIL AS NOTED. FINISH: STL-GALV	(S) MECHANICAL:	SEE MECHANICAL PLANS	(W2) TRIM PAINT TO MATCH STUCCO:		(HH) STUCCO EXPANSION JOINT:	SEE ARCHITECTURAL DETAILS
				(S1) MECHANICAL LOUVER:	SEE MECHANICAL PLANS FINISH TO MATCH WINDOWS	(X) SHADE CLOTH:	FUTURE		
				(T) SIGNAGE:	12" TALL LETTERS. PAINTED ALUMINUM	(Y) COLUMNS:	4" DIA. PER STRUCT. PAINT: DUNN EDWARDS DE6385 BLACK BEAN		
				(U) WINDOW:	METAL CLAD, NAIL ON FIN. COLOR: BRONZE SEE WINDOW SCHEDULE	(Z) BOLLARDS:	6" DIA. SEE DETAIL 13/A510 & 7/A515 GALVANIZED FINISH		

ELEVATIONS & SECTIONS NOTES

Elevations & Sections

EXECUTIVE DIRECTOR PFC	DATE
DIRECTOR PFC	DATE
DIRECTOR PROJECT MANAGEMENT PFC	DATE
DISTRICT ARCHITECT	DATE

IDENTIFICATION STAMP  
DIV. OF THE STATE ARCHITECT  
OFFICE OF REGULATION SERVICES  
**04 114084**  
AC \_\_\_\_\_ FLS \_\_\_\_\_ SS \_\_\_\_\_  
DATE \_\_\_\_\_



PREPARED FOR THE  
**BOARD OF EDUCATION**  
SAN DIEGO UNIFIED SCHOOL DISTRICT  
SAN DIEGO, CALIFORNIA

PREPARED BY THE  
FACILITIES PLANNING AND CONSTRUCTION  
PROJECT MANAGEMENT DEPARTMENT

OCEAN DISCOVERY INSTITUTE  
**LIVING LAB**  
4255 THORN STREET  
SAN DIEGO, CALIFORNIA

**CONSTRUCTION DOCUMENTS**

PROJECT NO.	R.S.	A.P.
FILE NAME	DATE	DRAWN
	10/16/16	CHECKED
REVISIONS	SHEET NO.	
DEFERRED SLIDING 10.16.2016	A-206	
	OF SHEETS	