



**OCEAN  
DISCOVERY  
INSTITUTE**  
*young lives transformed through science*

# INTRO TO RESEARCH VOLUNTEER ORIENTATION

May 2, 2022

# AGENDA

---

- **Introductions**
- Ocean Discovery Institute Overview
- The Ocean Leader Pathway
- Intro to Research Program
- Your Role as a Mentor
- Logistics
- Next Steps
- Bringing Your Family & Staying Off Site



---

# INTRODUCTIONS

---

# AGENDA

---

- Introductions
- **Ocean Discovery Institute Overview**
- The Ocean Leader Pathway
- Intro to Research Program
- Your Role as a Mentor
- Logistics
- Next Steps
- Bringing Your Family & Staying Off Site



# IMAGINE

---



# A PROBLEM

---



## OUR MISSION

---

To inspire the next generation of science leaders, Ocean Discovery Institute creates learning experiences for young people traditionally excluded from science due to race, income status, and educational opportunity. Our students will join high-paying fields, break generational poverty, and change the future of science.

# WHY WE ARE UNIQUE

---

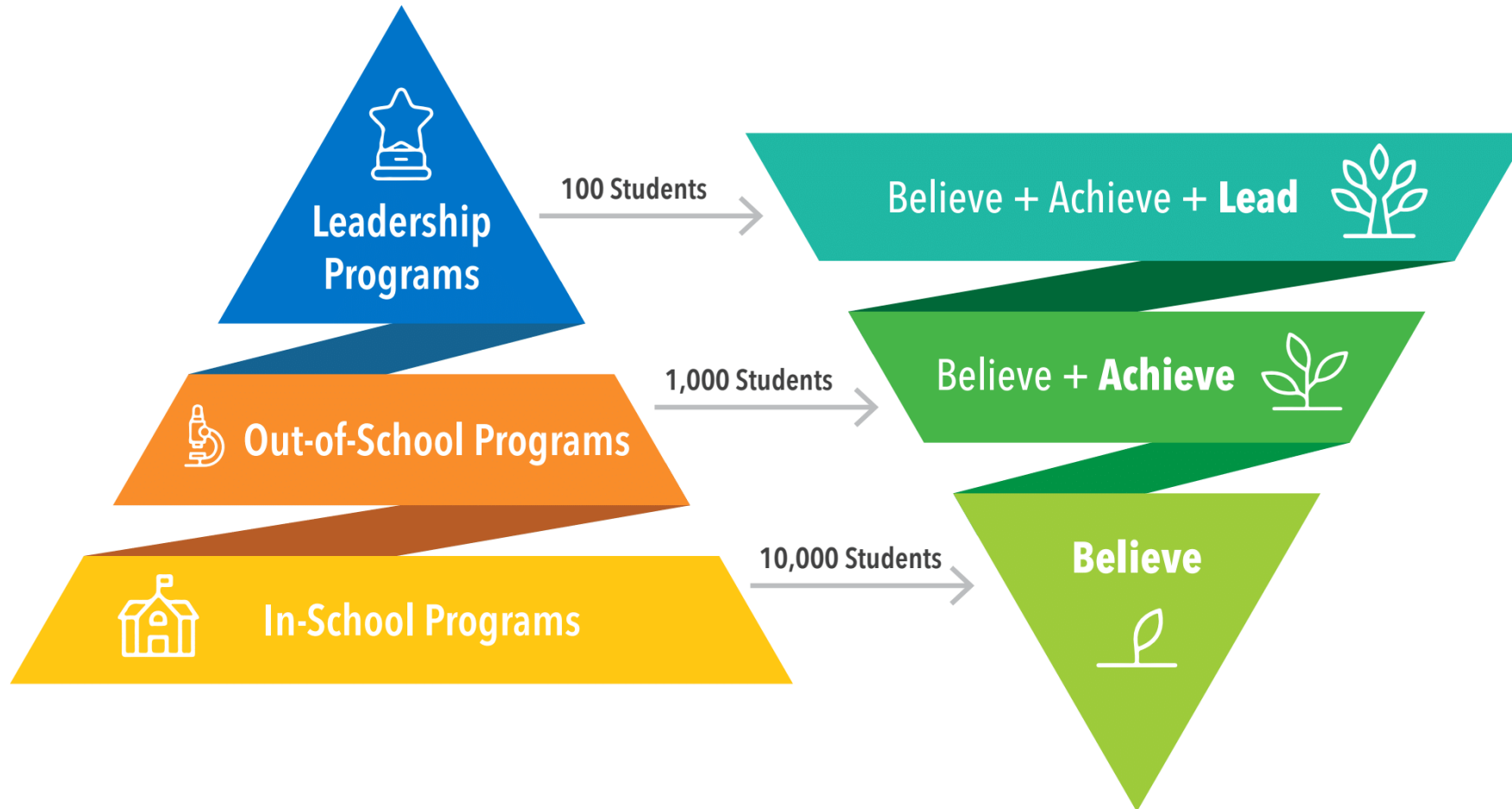


Our model:

- Reach one community at a time
- Supports students throughout their development K-career
- Provides all programming 100% tuition-free
- Uses the ocean as a platform for discovery
- Provides science experiences, mentoring, and tools for success both in-school and out-of-school



# OUR PROGRAMS & IMPACT



Our program model, showing the scale of each of our 3 programs (left) and their associated goals and impacts (right).

# OUR OUTCOMES

**5,800 out of 10,000** students participated

*In-school program participants:*

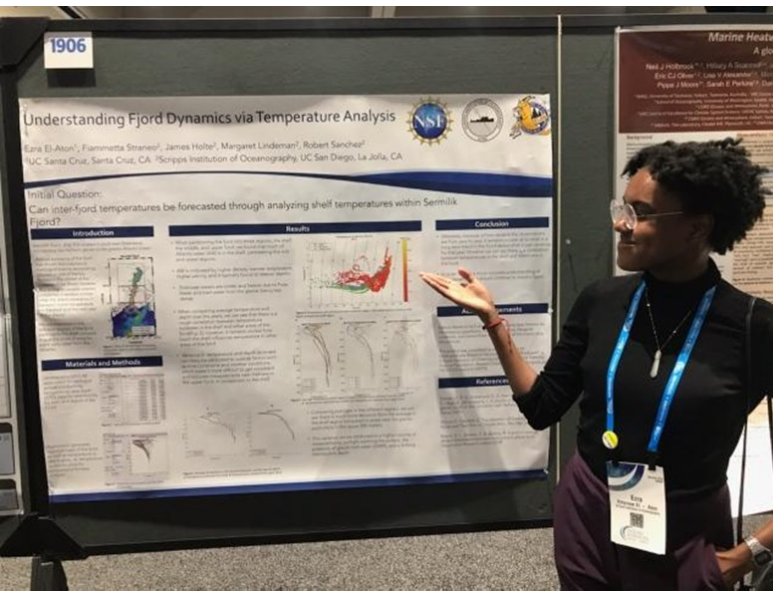
- **62%** of students demonstrated belief that they can do science and become a scientist.

*Out-of-school intensive leadership program participants:*

- Ocean Leaders are **6 times** more likely to graduate college than their peers.
- **90%** of students graduate college within 6 years
- **77%** of these students earned science and related degrees and **42%** attained careers in these fields



# OUR OCEAN LEADERS



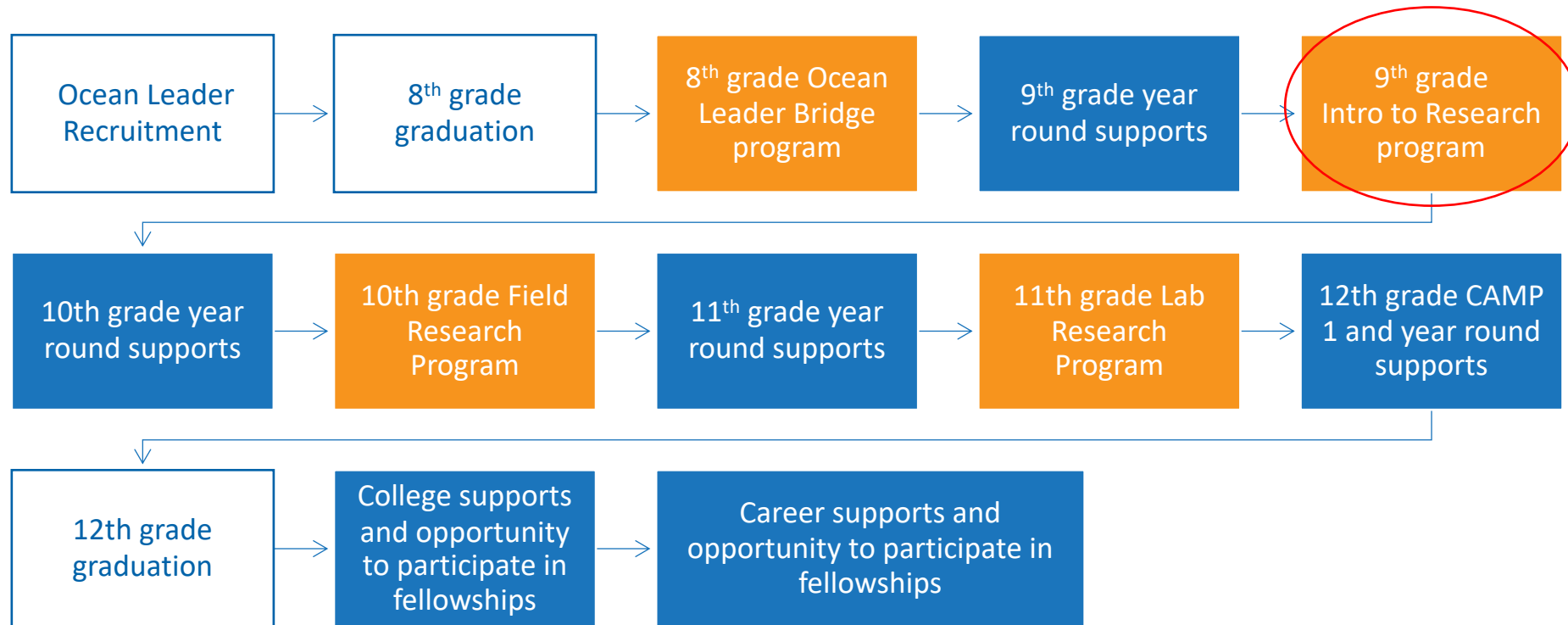
# AGENDA

---


- Introductions
- Ocean Discovery Institute Overview
- **The Ocean Leader Pathway**
- Intro to Research Program
- Your Role as a Mentor
- Logistics
- Next Steps
- Bringing Your Family & Staying Off Site



# LEADERSHIP PROGRAMS: PATHWAY OF AN OCEAN LEADER



 = Intensive summer programs

 = Year round supports including Academic Achievement, tutoring, field trips, college and career trips.

# AGENDA

---

- Introductions
- Ocean Discovery Institute Overview
- The Ocean Leader Pathway
- **Intro to Research Program**
- Your Role as a Mentor
- Logistics
- Next Steps
- Bringing Your Family & Staying Off Site



# OCEAN LEADER INTRO TO RESEARCH

- 12-day intensive program designed for students to experience hands-on science research in Bahía de los Angeles Mexico.
- In this program students will
  - Have daily field research experiences.
  - Swim and snorkel.
  - Writing and reflection.
  - Have daily fitness and recreation.



# PROGRAM DATES & SCHEDULE

## Group 1: Current 10<sup>th</sup>-11<sup>th</sup> grade Ocean Leaders

- July 18<sup>th</sup>- July 31<sup>st</sup>

## Group 2: Current 9<sup>th</sup> grade Ocean Leaders

- July 25<sup>th</sup>- August 7<sup>th</sup>

Daily Schedule		
6:00am	6:30am	Wake Up
6:30am	7:15am	Community Building
7:15am	12:15pm	Field Research
12:30pm	1:00pm	Lunch
1:05pm	1:45pm	Self-Reflection
1:45pm	2:30pm	Siesta
2:30pm	4:00pm	Salud
4:00pm	5:00pm	Know It! Own It!
6:00pm	6:30pm	Dinner
6:35pm	7:10pm	Servant Leadership
7:15pm	8:25pm	Evening Activity
8:30pm	9:00pm	Sleep Prep
9:00pm		Bed Time



# THROUGH THE EYES OF AN OCEAN LEADER

---

# AGENDA

---

- Introductions
- Ocean Discovery Institute Overview
- The Ocean Leader Pathway
- Intro to Research Program
- **Your Role as a Mentor**
- Logistics
- Next Steps
- Bringing Your Family & Staying Off Site



# YOUR ROLE AS A MENTOR

---

- Mentors will participate for a total of six days (2 days of travel to and from Baja + 4 program days).
- Science and Alumni mentors are paired with one group of approximately 7 students.
- Mentors will participate alongside students in field research components and other daily activities during which time you will:
  - Be an active participant in all aspects of the program.
  - Utilize the Ocean Discovery Growth Mindset Practice with students when appropriate (training to be provided).
  - Talk with students about your pathway as a science leader.

# SCIENCE & ALUMNI MENTOR SCHEDULE

You are welcome to be part of the entire day.....but the planned for daily responsibilities are:

## All Volunteers:

- Community Building and Field Research: 6:30am – 12:30pm

## Science Mentors:

- Know it! Own it!: 4:00 – 6:00pm
- 1-2 science mentors each day
- Mentors will sign up once in Bahia

## Alumni Mentors:

- Evening Activity: 7:15 – 8:25pm
- 1-2 alumni mentors each night
- Mentors will sign up for at least 2 activities

Daily Schedule		
6:00am	6:30am	Wake Up
<b>6:30am</b>	<b>7:15am</b>	<b>Community Building</b>
<b>7:15am</b>	<b>12:15pm</b>	<b>Field Research</b>
12:30pm	1:00pm	Lunch
1:05pm	1:45pm	Self-Reflection
1:45pm	2:30pm	Siesta
2:30pm	4:00pm	Salud
<b>4:00pm</b>	<b>5:00pm</b>	<b>Know It! Own It!</b>
6:00pm	6:30pm	Dinner
6:35pm	7:10pm	Servant Leadership
<b>7:15pm</b>	<b>8:25pm</b>	<b>Evening Activity</b>
8:30pm	9:00pm	Sleep Prep
9:00pm		Bed Time

# SYLLABUS

Day	Dates Cohort 1	Dates Cohort 2	Field Research	Evening Activity
1	7/19	7/26	<i>Explore &amp; Wonder</i> Program Goals & Field Station Orientation (Land)	Zumba
2	7/20	7/27	<i>Explore &amp; Wonder</i> Explore the Bay (Boat)	Circuit Training
3	7/21	7/28	<i>Investigate</i> Spider & Cactus Survey (Boat) – Cohort 1 Intertidal Monitoring (Land) – Cohort 2	Zumba
4	7/22	7/29	<i>Investigate</i> Fisheries (Boat)	Circuit Training
5	7/23	7/30	<i>Investigate</i> Wetlands (Land)	Zumba
6	7/24	7/31	<i>Analyze</i> Whale Shark Monitoring (Boat)	Circuit Training
7	7/25	8/1	<i>Analyze</i> Intertidal Monitoring (Land) – Cohort 1 Spider & Cactus Survey (Boat) – Cohort 2	<i>Analyze</i> Sea Turtle Monitoring (Land)
8	7/26	8/2	N/A Recover from Sea Turtle Monitoring (Land)	Zumba & Night Snorkel
9	7/27	8/3	<i>Make a Difference</i> Bird Monitoring (Land)	Circuit Training & Night Snorkel
10	7/28	8/4	<i>Celebrate Success!</i> Enjoy a day of beach and boat fun! (Boat)	Zumba & Night Snorkel
11	7/29	8/5	<i>Communicate</i> Museo (Land)	Circuit Training
12	7/30	8/6	<i>Communicate</i> Community Celebration (Land)	Community Celebration!

# SUMMER MENTOR SHIFT SCHEDULE

SHIFT #	DATES	ALUMNI AND SCIENTISTS
1	7/18 – 7/23 (Mon – Sat)	<p><b>Science Mentor:</b> Jasmin John, Elizabeth Drenkard, <b>Tara Marathe</b></p> <p><b>Alumni Mentor:</b> Jorge Rivera, <b>Zaira Linares</b>, <b>Diana Santos</b></p>
2	7/22 – 7/27 (Fri – Wed)	<p><b>Science Mentor:</b> Marlem Ocampo, <b>Vanessa Sandoval</b></p> <p><b>Alumni Mentor:</b> Jared Ocampo, Rudy Vargas,</p>
3	7/25 – 7/30 (Mon – Sat)	<p><b>Science Mentor:</b> Eber Lambert,</p> <p><b>Alumni Mentor:</b> Luis Ramirez, Yarjaira Nunez,</p>
4	7/26 – 7/31 (Tue – Sun)	<p><b>Science Mentor:</b> Christiana Salles, Tony Figueroa, <b>Sula</b></p> <p><b>Alumni Mentor:</b> Sonya Vargas, Richy Alvarez, Leslie Torres</p>
5	7/29 – 8/3 (Fri – Wed)	<p><b>Science Mentor:</b> Maksim Pecherskiy, Mary Cozy, <b>Thiago Lima</b></p> <p><b>Alumni Mentor:</b> Benny Gonzalez, Jordi Mejia, <b>Irazema Islas</b></p>
6	8/2 – 8/7 (Tue – Sun)	<p><b>Science Mentor:</b> Heather Bentley,</p> <p><b>Alumni Mentor:</b></p>

# AGENDA

---

- Introductions
- Ocean Discovery Institute Overview
- The Ocean Leader Pathway
- Intro to Research Program
- Your Role as a Mentor
- **Logistics**
- Next Steps
- Bringing Your Family & Staying Off Site



# WHERE IS BAHÍA DE LOS ANGELES?



- Bahía de los Angeles is located 400 miles south of the border on the Gulf of California.
- Approximately 8 hours from San Diego.





# FIELD STATION

---

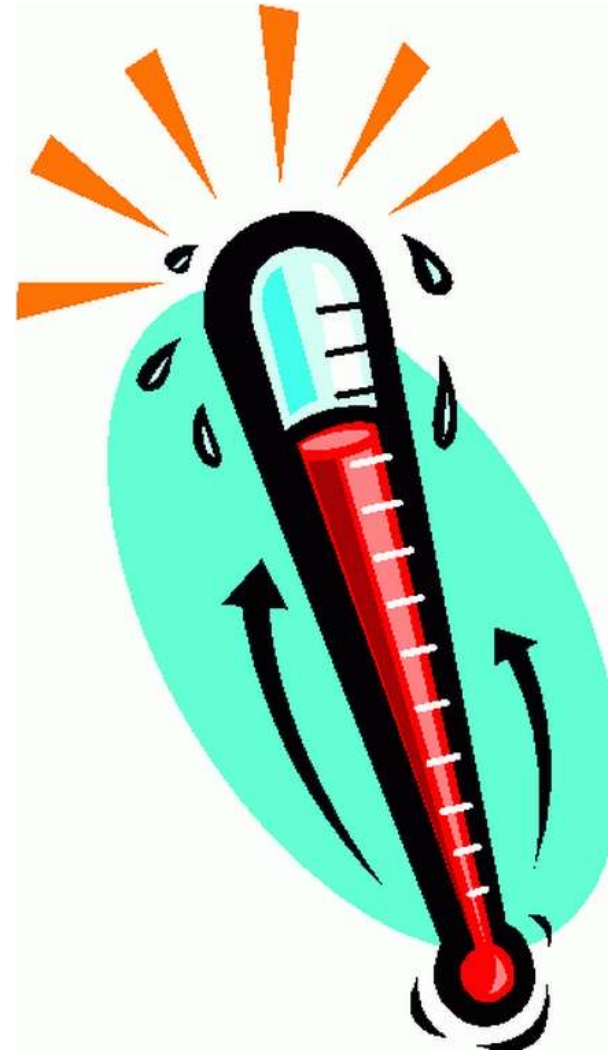


# WEATHER IN JULY & AUGUST

---

## It's hot!!

- Daytime average highs: 97 degrees F
- Nighttime average lows: 76 degrees F
- Average humidity: 44%



# PACKING LIST

---

## Note: Some items need to be acquired in advance

- Passport.
  - Check that it will not expire before your return to the US.
  - We recommend you make 2 photocopies of your passport.
  - Bring your passport plus 1 copy with you. Leave the other copy at home.
- Lunch, water, and snacks for the drive down.
- Cash: \$100 - \$500
  - There is no ATM. Credit cards are not accepted by all stores.
  - Small bills are best. You may receive a better exchange rate in the U.S., but pesos are not required.
- Sleeping gear:
  - Sleeping bag
  - Pillow
  - Sheet (recommended)
  - Earplugs (recommended)

# PACKING LIST

---

- Clothing (July/August weather in Bahia will be 79-97 on average)
  - T-shirts / long sleeve shirts (for sun protection) / shorts / extremely lightweight pants / summer dresses
  - Pajamas
  - Socks/underwear
  - Sun Hat (no visors)
  - Rashguard (recommended)
  - Athletic swimwear (swimwear should not be too revealing)
  - Sunglasses
  - Closed-toed shoes (tennis shoes, hiking shoes, etc.)
  - Water shoes for boats and all water activities (e.g., Keens). Flip flops may not be worn on boats.
  - Flip flops can be used for walking around the field station.

# PACKING LIST

---

- Other
  - Snorkel gear (wetsuit, fins, mask, and snorkel)
  - Wetsuit (recommended but not mandatory)
  - Headlamp/flashlight
  - Waterproof watch
  - Toiletries (including medications in original bottles)
  - Towel for showering
  - Beach towel
  - Water bottle
  - Sunscreen (sunscreen will also be available)
  - Day pack

**Pack as light as possible, space will be extremely limited during travel and while in Bahía.**

# AGENDA

---

- Introductions
- Ocean Discovery Institute Overview
- The Ocean Leader Pathway
- Intro to Research Program
- Your Role as a Mentor
- Logistics
- **Next Steps**
- Bringing Your Family & Staying Off Site



# NEXT STEPS

---

Visit the Volunteer Portal: <https://oceandiscoveryinstitute.org/ocean-leader-intro-to-research-program-volunteer-portal/>

Fill out & Return by **June 15<sup>th</sup>**:

- Volunteer Application (if you haven't already completed)
- Live Scan (if you haven't already completed)
- Fit to Travel Form
- Liability Form
- Proof of Up To Date COVID Vaccine
- Neg TB Test Results

Review on Portal:

- Packing List, Weather Conditions, & Dress Code
- Mentor Training Video
- This PPT
- Additional Trainings (upcoming – you will be alerted via email)
- Day of Departure Schedule & Logistics (including directions)
- Syllabus

# NEXT STEPS

---

- Visit the volunteer portal
- Complete all paperwork
- Confirm program dates (with Anne)
- Stand by for next meeting to confirm final logistics
- Call, text, email with any questions
  - 619.980.9038
  - [acorreia@oceandi.org](mailto:acorreia@oceandi.org)
- COVID Consideration (for all traveling to Bahia including family members)
  - Proof of a negative COVID-19 PCR or antigen test.
    - PCR tests must be taken with within 72 hours before departure and the result provided to Ocean Discovery prior to travel.
    - Rapid antigen tests must be taken within 24 hours before departure and verified by trained professional (at CVS, etc.)
- **Provide proof of a lab-based positive COVID-19 test from within the last 90 days.**



## COVID-19 SAFETY

---

Ocean Discovery continues to monitor the state of the pandemic and will update parents and families of any program changes.

Specific safety measures have been put in place to help keep everyone safe:

- We are monitoring community transmission and COVID-19 levels
- All students, staff, and mentors must be fully vaccinated to participate.
  - Why?
    - Bahia is remote
    - Due to the heat, masks cannot be worn in most areas (if at all).
- All students, staff, and volunteers will be required to submit a negative COVID test before traveling.
- Ocean Discovery will bring at-home tests for students, staff, and volunteers.
- The majority of the program is well-ventilated and outdoors, including eating, sleeping, and field research activities.

---

QUESTIONS?

---

# AGENDA

---

- Introductions
- Ocean Discovery Institute Overview
- The Ocean Leader Pathway
- Intro to Research Program
- Your Role as a Mentor
- Logistics
- Next Steps
- **Bringing Your Family & Staying Off Site**



# TRAVELING WITH FAMILY

---

Places to stay offsite:

- Campo Archelon
- Los Vientos Hotel
- Costa del Sol
- Las Hamacas

Activities to join with the program:

- Dinner
- Evening Activities (Zumba, Circuit Training, Night Snorkel)

# TRAVELING WITH FAMILY

---

Fun on your own:

- Fishing / wildlife searching / snorkeling & diving (coordinate through Shara – 619.665.3861)
- Visit the Museo
- Night hike at Red Mountain to look for scorpions (coordinate through Anne)
- Relax at Campo Archelon café, Guillermo's, or other local hot spots
- There are always new and exciting adventures awaiting!



**OCEAN  
DISCOVERY  
INSTITUTE**  
*young lives transformed through science*

THANK YOU!