



**OCEAN  
DISCOVERY  
INSTITUTE**  
*young lives transformed through science*

**FISH ARE FRIENDS**  
SUMMER CAMP



**OCEAN  
DISCOVERY  
INSTITUTE**  
*young lives transformed through science*

**DAY 1**

# COMMUNITY AGREEMENTS

---

## BE YOUR BEST SELF

### Be curious!

- Ask questions, make observations, and share your thoughts and ideas.

### Be respectful!

- Respect people, living things, and the environment around you.

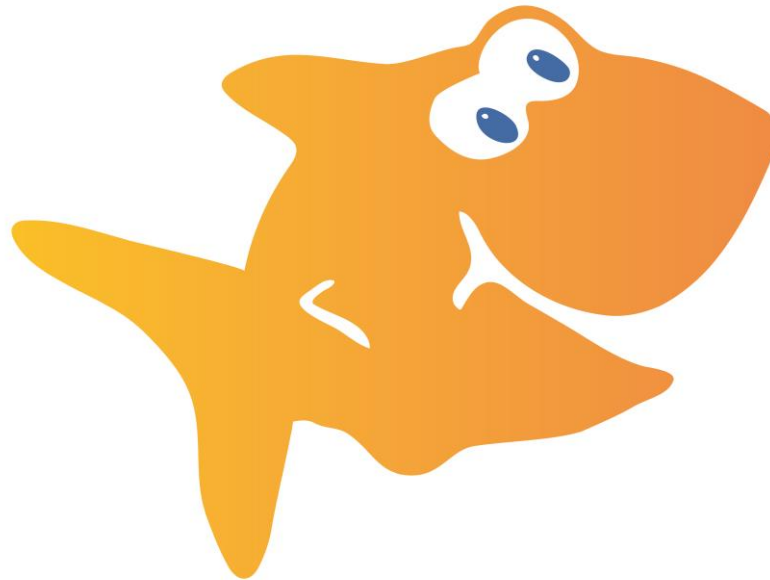
### Be safe!

- Take care of yourself and others.

# GOALS FOR THE DAY

---

- 1) Getting to know your new Ocean Discovery family
- 2) Learning about the Science Leader pathway
- 3) Learning about fish – who are our friends!



Fish Are  
Friends!!

# SEED TO TREE SCIENCE LEADER PATHWAY

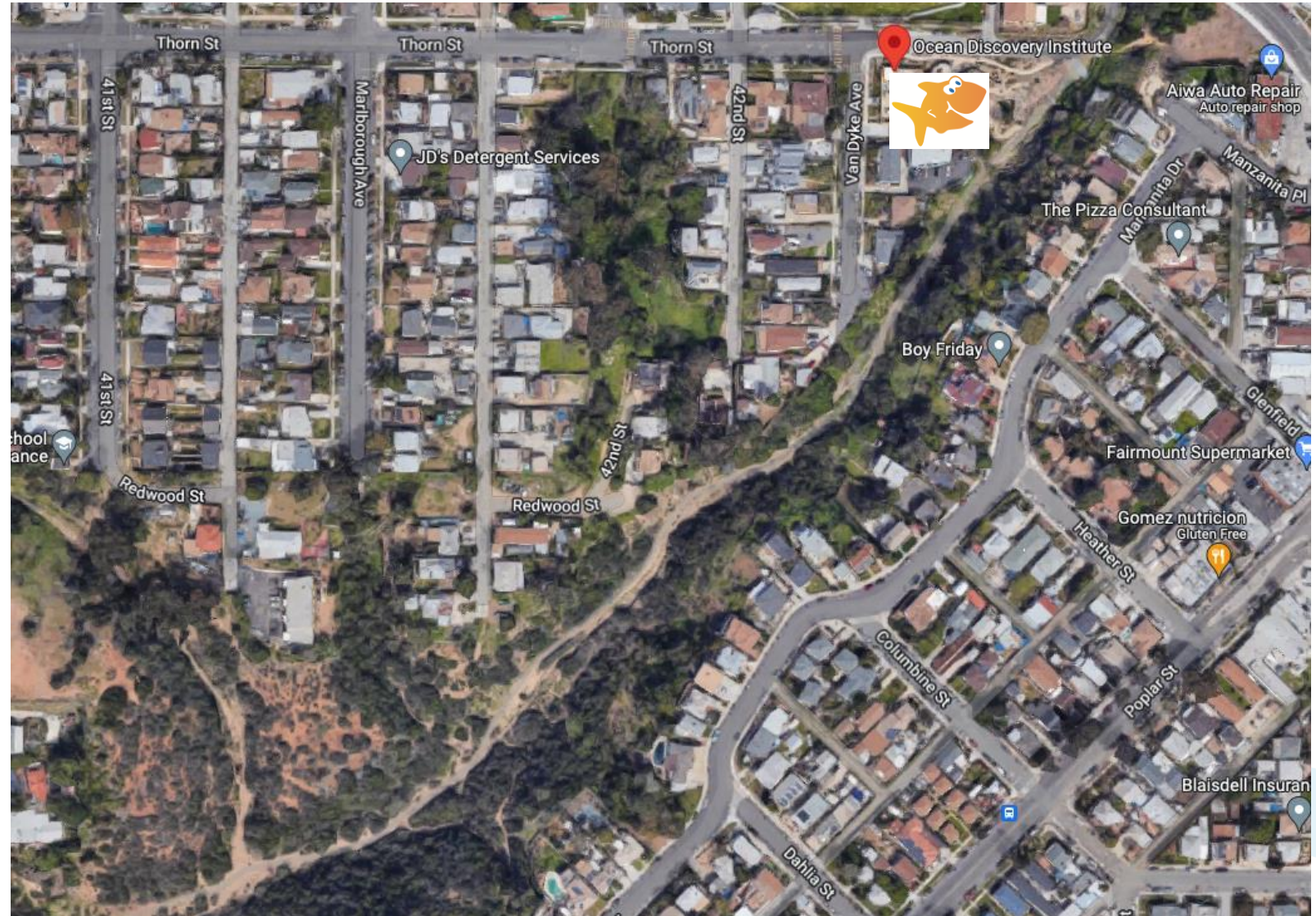
---



**OCEAN  
DISCOVERY  
INSTITUTE**  
*young lives transformed through science*

# CANYON

We are currently where Odi the fish is!



# SIGNPOST & FISH EGG

---

## PICTURE OF FISH EGG

Search Here  
for  
Fish Egg #1



Fish Are Friends!

# EXPECTATIONS

---

- We must stay together as a team.
- If you find an egg of another color, leave it where you found it.
- There will be two eggs of our color at each location. Each team will only take ONE.
- When you find an egg for our team, bring it to the Team Lead to be opened.
- We will open all the eggs as a group.

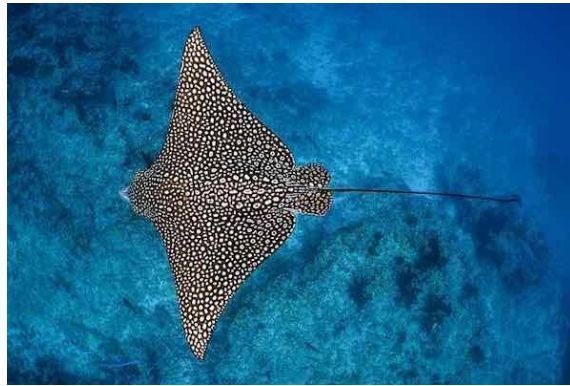




**OCEAN  
DISCOVERY  
INSTITUTE**  
*young lives transformed through science*

## FISH INTERNAL AND EXTERNAL ANATOMY

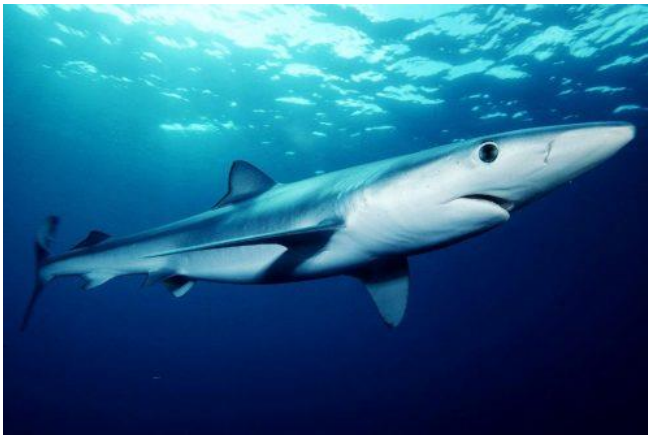
# FISH



# CARTILAGINOUS V. BONY FISH

---

Cartilaginous  
*(Skeleton of cartilage)*



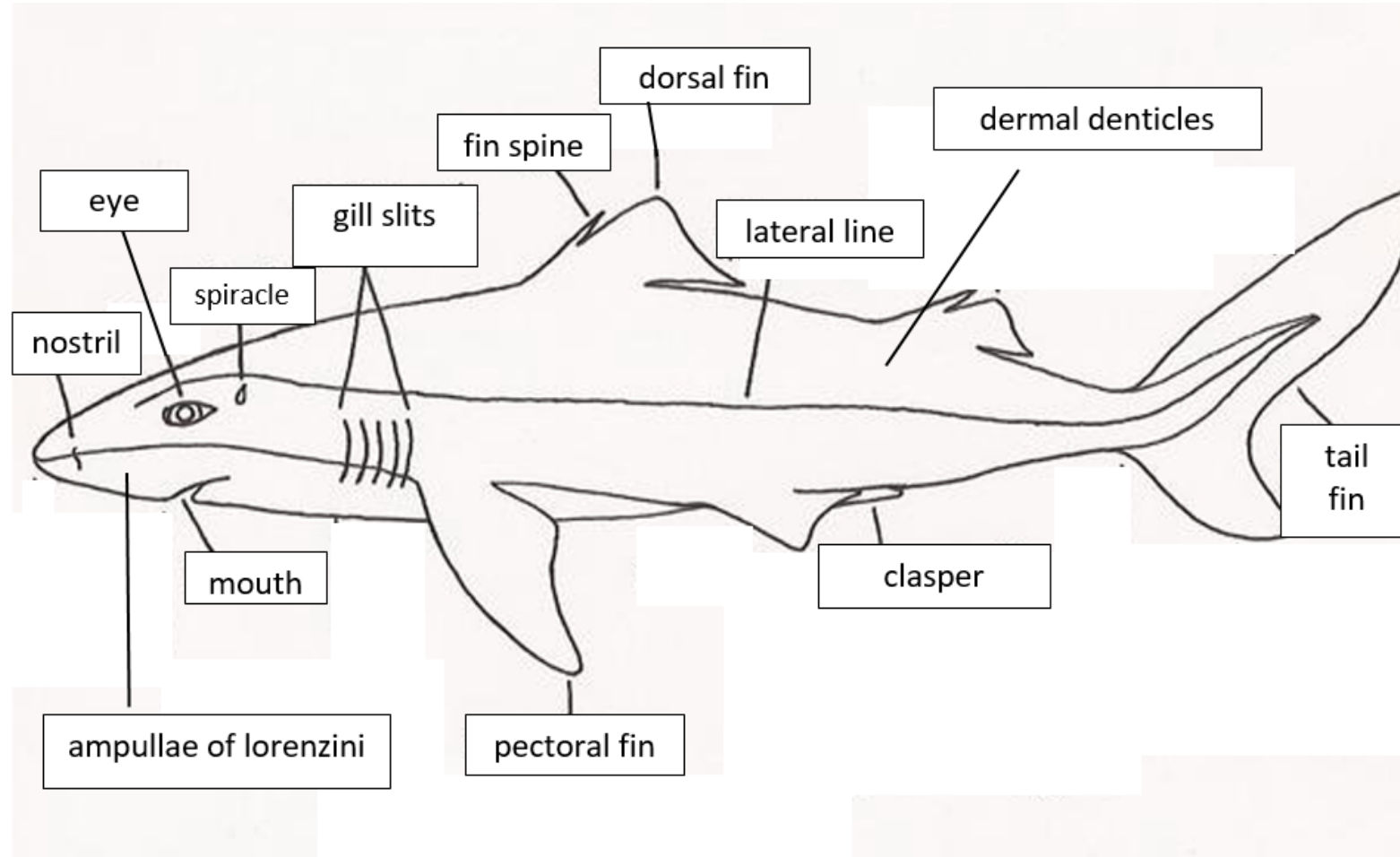
Bony  
*(Skeleton of bones)*



# EXTERNAL SHARK ANATOMY



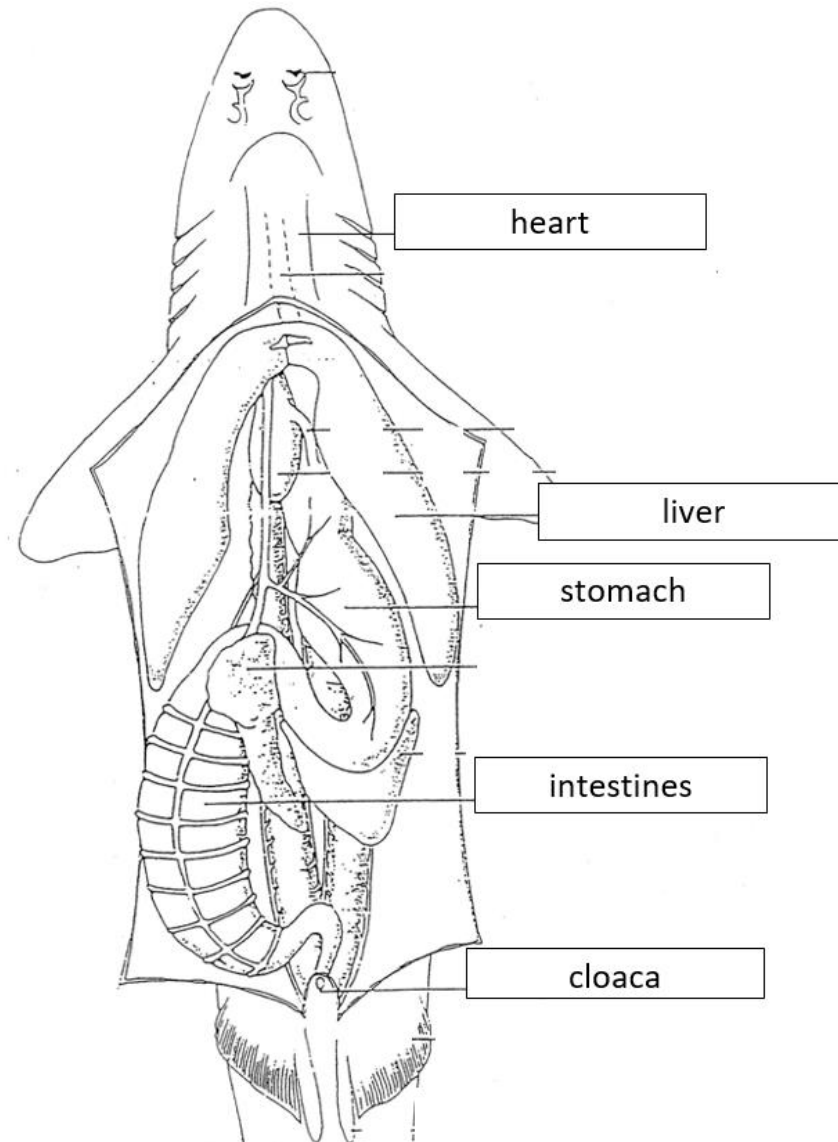
# EXTERNAL SHARK ANATOMY



# INTERNAL SHARK ANATOMY



# INTERNAL SHARK ANATOMY



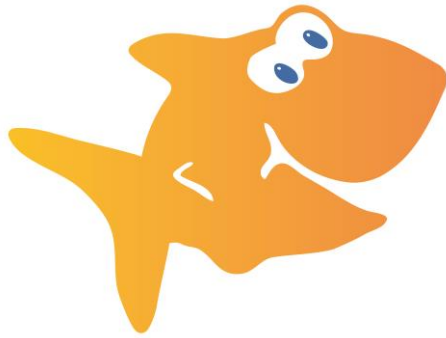


**OCEAN  
DISCOVERY  
INSTITUTE**  
*young lives transformed through science*

## FISH MORPHOLOGY



# FISH



# DOLPHIN



# MORPHOLOGY ACTIVITY EXAMPLE

---

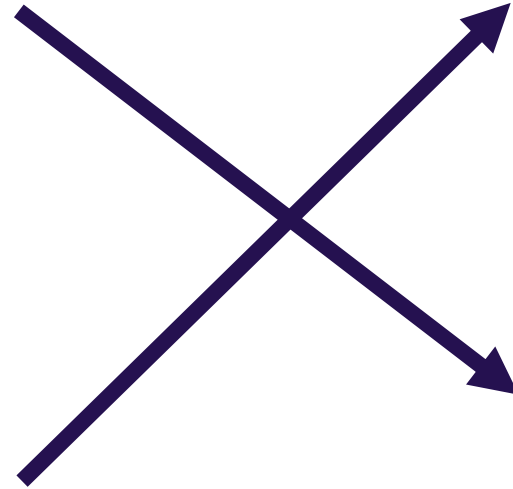
## ANIMAL



## MORPHOLOGY

Curved paddle-shaped limbs.

Long, powerful back legs.



# FISH SHAPES

**Body shape:**  
Flat & Thin



**Body shape:**  
Thin and swims normally



**Body shape:**  
Rod (long and thin)



**Body shape:**  
Oval or Football Shape



**Body Shape:**  
Long or Wide Head



**Tailfin shape:**  
C- shaped



**Tailfin shape:**  
Rounded



**Body shape:**  
Snake-like





**OCEAN  
DISCOVERY  
INSTITUTE**  
*young lives transformed through science*

**MAKE A DIFFERENCE DAY**

# EXPECTATIONS

---

## Fishing Game:

- You and a partner will be a fishing team.
- Only one partner will fish each round the other partner will hold the fish that are caught.
- Each fish you catch will earn you \$100.
- The highest number of fish you can catch is 14. If you catch 14 you are done for the day.
- Each night, after the day's fishing is over, the remaining fish in the pool will reproduce at a rate of 20% of the remaining fish.
  - Example:
    - End of day = 15 fish
    - 20% of 15 fish = 3 more fish
    - Next day = 18 fish



**OCEAN  
DISCOVERY  
INSTITUTE**  
*young lives transformed through science*

**MAKE A DIFFERENCE DAY**