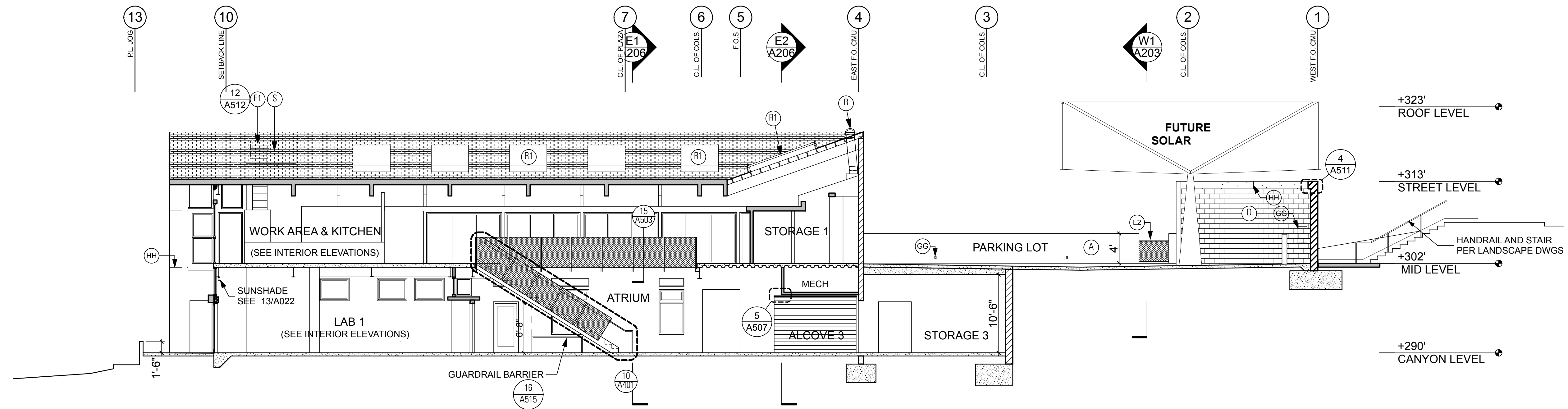


**N2 NORTH FACING ELEVATION/SECTION** 1/8" = 1'-0"



**N3 SECTION VIEWED FROM NORTH** 1/8" = 1'-0"

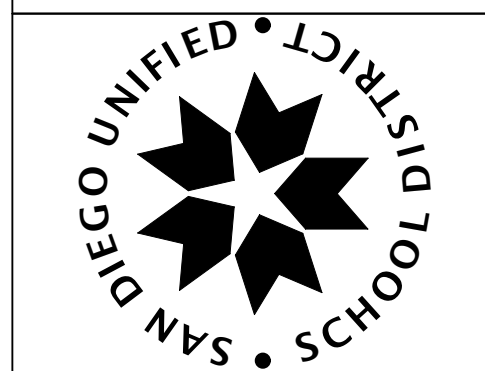
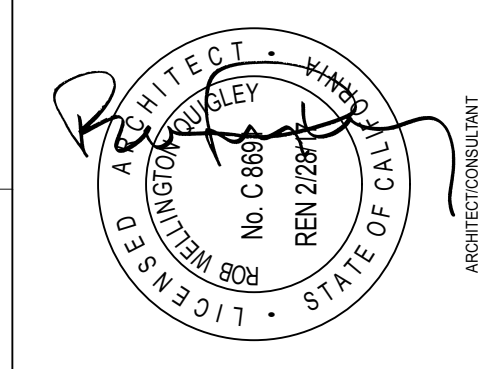
|  |   |  |   |   |
|--|---|--|---|---|
| <p>(A) STUCCO: LIGHT DASH FINISH<br/>PAINT: DUNN EDWARDS DEA 116<br/>"FLASH OF ORANGE"</p> <p>(A1) STUCCO: LIGHT DASH FINISH<br/>PAINT: DE6385 BLACK BEAN</p> <p>(B) CONCRETE: VERTICAL BOARD FORM ON EXTERIOR<br/>W/ CLEAR MATTE GRAFFITTI COATING<br/>SHOTCRETE ON INTERIOR W/ HEAVY<br/>TEXTURE. CLEAR, MATTE SEALER<br/>GRAFFITTI COATING</p> <p>(C) STONE: RIVERROCK STONE VENEER. SEE 14/A501</p> <p>(D) CMU: FLUSH JOINTS, PRIMED PAINTED</p> <p>(D1) CMU: RAKED JOINTS. SEALED</p> <p>(D2) CMU: CONCAVE JOINT. UNFINISHED</p> <p>(E) GUARDRAIL: METAL FRAME W/ EXPANDED METAL<br/>LATH INFILL. SEE 3/A503, TYP. &amp; AS<br/>NOTED. ENTIRE RAIL TO BE GALVANIZED</p> | <p>(E1) GUARDRAIL: DETAIL AS NOTED. PAINT: DUNN EDWARDS<br/>DE6385 BLACK BEAN</p> <p>(E2) HANDRAIL: DETAIL AS NOTED. PAINT: DE6385 BLACK BEAN</p> <p>(F) ROOF FRAMING: EXPOSED ROOF JOISTS &amp; SHEATHING<br/>STAIN: SHERWIN WILLIAMS SW7103<br/>WHITETAIL</p> <p>(G) ASPHALT SHINGLES: COLOR: DARK GREY</p> <p>(H) METAL SIDING: SHEET METAL. PAINT TO MATCH WINDOW<br/>FINISH. SEE 11/A501 TYP.</p> <p>(J) GUTTER: DETAILS AS NOTED. PAINTED TO MATCH<br/>STUCCO</p> <p>(K) DOWNSPOUT: DETAILS AS NOTED. FINISH: STL-PNT-1</p> <p>(L1) FENCE: 1" DIA GALV FENCE, DETAIL AS NOTED.<br/>FINISH: STL-GALV</p> | <p>(L2) CHAIN FENCE: CHAIN LINK PER LANDSCAPE<br/>DETAILS 2&amp;3/L.11</p> <p>(M) TRELLIS: DETAILS AS NOTED. PAINT: DUNN EDWARDS<br/>DEA111 BURNING TOMATO</p> <p>(N) MAST: 6" DIA. STEEL POSTS. GALVANIZED FINISH<br/>FOR FUTURE WEATHER STATION</p> <p>(O) CERAMIC TILE: DONOR'S TILES</p> <p>(P) WIRE PARTITION SYSTEM: INSTALL PER MANUF. &amp; 3/A513.<br/>FINISH: STL-GALV</p> <p>(R) TUBE SKYLIGHT: SOLATUBE. SEE WINDOW SCHEDULE</p> <p>(R1) SKYLIGHT: KALWALL. SEE WINDOW SCHEDULE</p> <p>(S) MECHANICAL: SEE MECHANICAL PLANS</p> <p>(S1) MECHANICAL LOUVER: SEE MECHANICAL PLANS<br/>FINISH TO MATCH WINDOWS</p> <p>(T) SIGNAGE: 12" TALL LETTERS. PAINTED ALUMINUM</p> <p>(U) WINDOW: METAL CLAD, NAIL ON FIN. COLOR: BRONZE<br/>SEE WINDOW SCHEDULE</p> | <p>(U1) WINDOW: METAL CLAD, NAIL ON FIN. COLOR: BRONZE<br/>OKALUX GLASS. SEE WINDOW SCHEDULE</p> <p>(U2) WINDOW: METAL CLAD, NAIL ON FIN. COLOR: BRONZE<br/>OBSCURE GLASS. SEE WINDOW SCHEDULE</p> <p>(V) SLIDING GLASS DOOR: SEE DOOR SCHEDULE</p> <p>(V1) GATE: SEE DOOR SCHEDULE</p> <p>(V2) ROLL-UP GATE: SEE DOOR SCHEDULE</p> <p>(W) TRIM PAINT RED: PAINT: DUNN EDWARDS<br/>DEA111 BURNING TOMATO</p> <p>(W1) TRIM PAINT DARK: PAINT: DUNN EDWARDS<br/>DE6385 BLACK BEAN</p> <p>(W2) TRIM PAINT TO MATCH STUCCO:</p> <p>(X) SHADE CLOTH: FUTURE</p> <p>(Y) COLUMNS: 4" DIA. PER STRUCT. PAINT: DUNN EDWARDS<br/>DE6385 BLACK BEAN</p> <p>(Z) BOLLARDS: 6" DIA. SEE DETAIL 13/A510 &amp; 7/A515<br/>GALVANIZED FINISH</p> | <p>(AA) EXPOSED STRUCTURE: PER STRUCTURAL.<br/>@ EXTERIOR GALVANIZED AND PAINT<br/>AS NOTED IN ELEVATIONS/DETAILS</p> <p>(BB) CONCRETE BENCH: CAST CONCRETE - TROWELED FINISH<br/>PER SPECS</p> <p>(CC) TUBE OUTLET COVER:</p> <p>(DD) WINDOW LIGHT SHELF: SEE DETAIL 1&amp;5/A512<br/>GALVANIZED FINISH</p> <p>(EE) LIGHTING: SEE ELECTRICAL PLANS</p> <p>(FF) CORNER GUARD: SEE DETAIL 15/A510</p> <p>(GG) ELECTRICAL: SEE ELECTRICAL PLANS</p> <p>(HH) STUCCO EXPANSION JOINT: SEE ARCHITECTURAL DETAILS</p> |
|--|---|--|---|---|

**ELEVATIONS & SECTIONS NOTES**

**Elevations & Sections**

|                                 |      |
|---------------------------------|------|
| EXECUTIVE DIRECTOR PFC          | DATE |
| DIRECTOR PFC                    | DATE |
| DIRECTOR PROJECT MANAGEMENT PFC | DATE |
| DISTRICT ARCHITECT              | DATE |

IDENTIFICATION STAMP  
DIV. OF THE STATE ARCHITECT  
OFFICE OF REGULATION SERVICES  
**04 114084**  
AC \_\_\_\_\_ FLS \_\_\_\_\_ SS \_\_\_\_\_  
DATE \_\_\_\_\_



PREPARED FOR THE  
**BOARD OF EDUCATION**  
SAN DIEGO UNIFIED SCHOOL DISTRICT  
SAN DIEGO, CALIFORNIA

PREPARED BY THE  
FACILITIES PLANNING AND CONSTRUCTION  
PROJECT MANAGEMENT DEPARTMENT

**OCEAN DISCOVERY INSTITUTE**  
**LIVING LAB**  
4255 THORN STREET  
SAN DIEGO, CALIFORNIA

**CONSTRUCTION DOCUMENTS**

|             |           |               |
|-------------|-----------|---------------|
| PROJECT NO. | R.S.      | A.P.          |
| FILE NAME   | DATE      | DRAWN CHECKED |
| REVISIONS   | 10/16/16  |               |
| SHEET NO.   | A-202     |               |
|             | OF SHEETS |               |