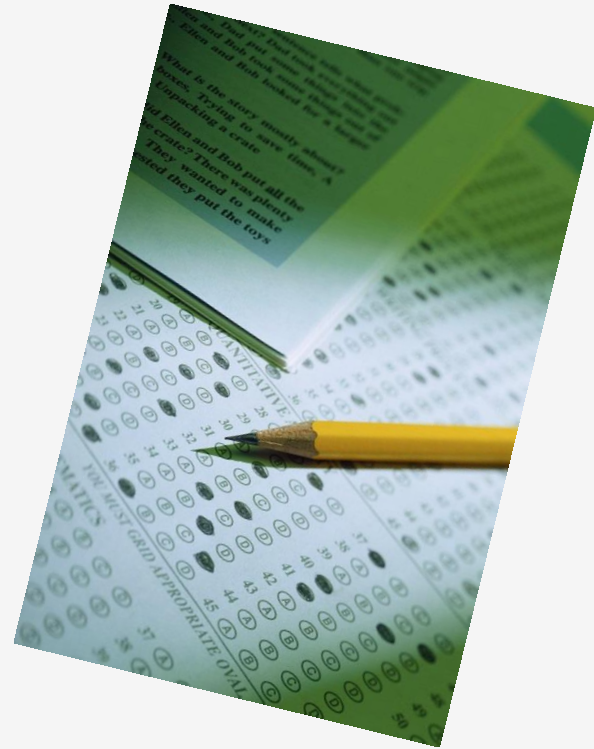


# The Graduate Record Exam (GRE)



# There are two types of GRE's: revised General Test and Subject Tests

By far the most common is the general test version which is offered year round on computer. It has three sections:

- **Verbal Reasoning** — Measures your ability to analyze and evaluate written material and synthesize information obtained from it, analyze relationships among component parts of sentences and recognize relationships among words and concepts.
- **Quantitative Reasoning** — Measures problem-solving ability, focusing on basic concepts of arithmetic, algebra, geometry and data analysis.
- **Analytical Writing** — Measures critical thinking and analytical writing skills, specifically your ability to articulate and support complex ideas clearly and effectively.

The overall testing time for the computer-based *GRE*® revised General Test is about three hours and 45 minutes. There are six sections with a 10-minute break following the third section.

# How is the test structured?

Measure	Number of Questions	Allotted Time
<b>Analytical Writing</b> (One section with two separately timed tasks)	One "Analyze an Issue" task and one "Analyze an Argument" task	30 minutes per task
<b>Verbal Reasoning</b> (Two sections)	20 questions per section	30 minutes per section
<b>Quantitative Reasoning</b> (Two sections)	20 questions per section	35 minutes per section
<b>Unscored<sup>1</sup></b>	Varies	Varies
<b>Research<sup>2</sup></b>	Varies	Varies

<sup>1</sup>An unidentified unscored section that does not count toward your score may be included and may appear in any order after the Analytical Writing section. Questions in the unscored section are being tried out either for possible use in future tests or to ensure that scores on new editions of the test are comparable to scores from earlier editions.

<sup>2</sup>An identified research section that does not count toward your score may be included in place of the unscored section. The research section will always appear at the end of the test. Questions in this section are included for ETS research purposes.

The Analytical Writing section will always be first. The Verbal Reasoning, Quantitative Reasoning and unidentified/unscored sections may appear in any order; therefore, you should treat each section as if it counts toward your score.

# Test Design Features

The GRE revised General Test design features advanced technology that allows you to freely move forward and backward throughout an entire section. Specific features include:

- Preview and review capabilities within a section
- "Mark" and "Review" features to tag questions, so you can skip them and return later if you have time remaining in the section
- The ability to change/edit answers within a section
- An on-screen calculator for the Quantitative Reasoning section

Paper subject tests offered up to three times a year—Sept, Oct and April



# Score Reporting Options

**On test day**, when viewing your scores at the test center\*, you can choose not to send your scores at this time OR you can select either option below for each of your four FREE score reports:

- **Most Recent** option — Send your scores from your current test administration.
- **All** option — Send your scores from all General Test administrations in the last five years.

**After test day**, you can send additional score reports for a fee and select from these options for each report you'd like to send:

- **Most Recent** option — Send your scores from your most recent test administration.
- **All** option — Send your scores from all test administrations in the last five years.
- **Any** option — Send your scores from one OR as many test administrations as you like from the last five years.

Just knowing you have the option to decide which GRE scores to send to institutions should give you added confidence the first time you take the test. However, if you decide you want to take a GRE test again, that's okay. You can do so [once every 21 days](#) and up to five times within any continuous rolling 12-month period, depending on test center availability.

# Scoring Ranges

## GRE® revised General Test (tests taken on or after August 1, 2011)

Measure	Scores Reported
Verbal Reasoning	130–170, in 1 point increments
Quantitative Reasoning	130–170, in 1 point increments
Analytical Writing	0–6, in half point increments

If no questions are answered for a specific measure (e.g., Verbal Reasoning), then you will receive a No Score (NS) for that measure

# Cost



Standard Test Administration:

GRE® revised General Test —  
worldwide

\$185

Special Handling Requests:

Late registration fee (paper-based  
test online registration only)

\$25

Standby testing (paper-based test  
only)

\$50

Rescheduling fee

\$50

Changing your test center

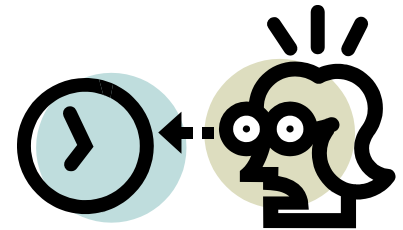
\$50

**If you are on financial aid, stop by the Financial Aid office to find out if you qualify for a GRE Fee Reduction Certificate.**

# Nearest Testing Site

- Puyallup - 0211
- Prometric Testing Center  
12020 Meridian Ave East  
Suite D  
United States of America  
98373  
253-848-0771

Test sites can get very busy in late fall and early winter when everyone wants to get scheduled so don't wait until the last minute to register.





# Subject Tests

Each **Subject Test** is intended for students who have an undergraduate major or extensive background in one of these seven disciplines:

- [Biochemistry, Cell and Molecular Biology](#)
- [Biology](#)
- [Chemistry](#)
- [Literature in English](#)
- [Mathematics](#)
- [Physics](#)
- [Psychology](#)

These are paper-based tests, offered three times per year. You need to register at least five weeks in advance to avoid late fees. The closest test site is at Pacific Lutheran University. Your scores are available online or by phone a month after taking it.

# Final bits and pieces...

- GRE: <http://www.ets.org/gre>
- **Statute of Limitations:** Know that your test scores are not good forever. It depends on the program. Check with your schools...
- **Practice, practice, practice!** Do NOT take the test cold; your scores go up simply with familiarity and repetition. Utilize prep/practice resources including *Cracking the GRE* and other guides available at Career Development and the Library. Check out YouTube videos—such as Grockit for mini tutorials. Use Khan Academy's free tutorials ([https://www.ets.org/gre/revised\\_general/prepare/khan\\_academy](https://www.ets.org/gre/revised_general/prepare/khan_academy)) to practice your math, if necessary. Take advantage of free prep resources offered by the GRE folks as well.