

BELIEVE ACHIEVE LEAD



2018 Annual Report



IMAGINE

Imagine a nation where all of our young people unlock their potential. Imagine these young people become the diverse and thoughtful leadership we need.

And because of this, cities are resilient to climate change, ecosystems thrive, and discoveries are made that protect our loved ones and make our time on earth even richer.

Ocean Discovery Institute imagines just that.

But we aren't there yet.

IMAGINE

Dear Ocean Discovery Community,

We've all worked so hard for this. And now, what we once imagined is a reality - the Living Lab is open and young people are making this place of science their second home. Children flow through the doors in the morning and discover state-of-the-art labs created just for them. After school, kids and their parents explore the deep sea alongside our Scientist-in-Residence while other children get help with their homework or build their literacy skills reading books about ecosystems and wildlife. Middle school students conduct research to better understand sea lion ecology and high school students work with mentors to select which university they'll attend. There is laughter, sometimes struggle, and always comradery.

What happens next? These young people, who otherwise would have few opportunities before them, now know that they can become our future cancer researchers, marine biologists, and software engineers. They know that they will become successful adults who can support their families and contribute to making our world a better place.

You, our community, built this. And you are making it come alive for thousands of young people.

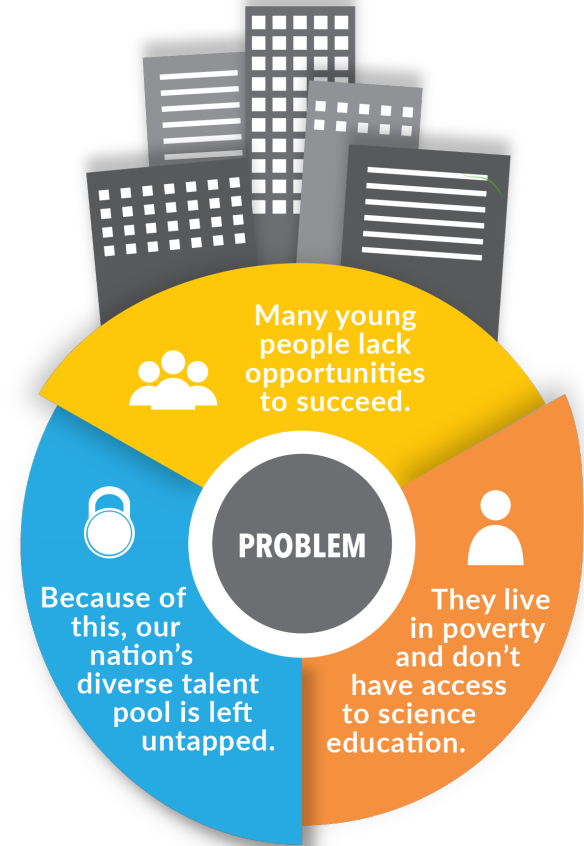
With gratitude,

A handwritten signature in dark ink, appearing to read 'Shara', followed by a horizontal line.

Shara Fisler
Executive Director & Founder

THE NATIONAL PROBLEM

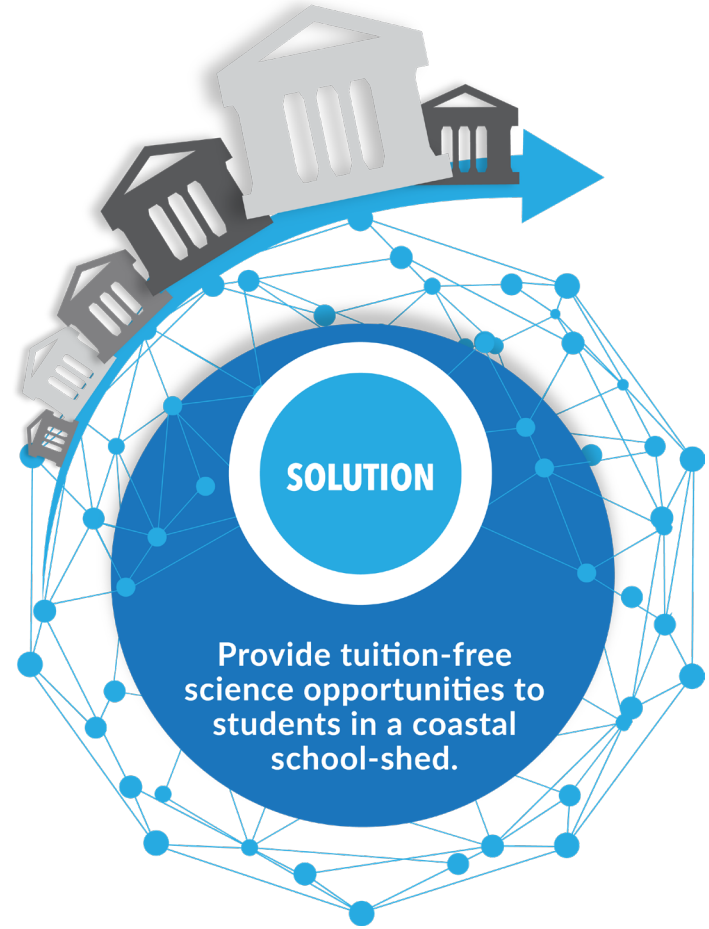
Today, many young people in our country live in poverty and lack opportunities to succeed. One of these glaringly absent opportunities is access to rigorous science education. Because of this, young people who grow up in underserved communities don't believe science is something they can do or that a scientist is someone they can be. This means that we are excluding entire groups of people from participation in the sciences and ultimately, we are missing the chance for great discoveries.



OUR LOCAL SOLUTION

Ocean Discovery's solution is simple – provide continuous science opportunities, paired with mentoring and the tools to overcome challenges to our young people to unlock their potential.

All programming is 100% tuition-free and provided along a young person's entire development from kindergarten to career. We provide science education across one "school-shed" at a time. A school-shed operates just like a watershed, where all of the elementary schools flow into two middle schools, which flow into one high school. This focus on one community is what is required to truly transform young lives through science.





MISSION

Ocean Discovery Institute uses ocean science to empower young people from underserved urban communities to transform their lives, their community, and our world as science and conservation leaders.

IN SCHOOL PROGRAMS

In-school programs are integrated as part of a student's classroom curriculum and aligned with Next Generation Science Standards. In-school programs are provided at multiple grade levels and bring hands-on science lessons, scientific equipment, and scientists reflective of our students into classrooms that otherwise would receive limited to no science at all.

OUT-OF-SCHOOL PROGRAMS

Out-of-school programs are a series of programs for students who elect to do more outside of their classroom. Students become leaders in STEM through participation in authentic research, development of practical work skills, and provision of critical academic and social tools.

IMPACT

3,500

K – 12th grade students, out of 10,000 students, participated in ocean science programs.

14 schools

received rigorous science that they otherwise would not have access to.

100%

of our in-school and out-of-school programs were provided at no cost.

72%

of in-school program students increased their science knowledge upon program completion

95%

of our intensive program students enrolled in higher education after high school

44%

of out-of-school program students who graduated from a 4-year post-secondary institution majored in STEM, compared to a national average of 20%



OUR WORK

Our students, like seeds who grow into tall trees, begin full of potential but with limited opportunity. Over time, we provide science experiences, mentoring, and tools for success that allow students to grow into science and conservation leaders – like tall trees given the space and resources to thrive.

SEEDLINGS

Grades K-5
Elementary School



SPROUTS

Grades 6-8
Middle School



SAPLINGS

Grades 9-12
High School



OUT-OF-SCHOOL

Seedlings look through microscopes for the first time and identify what science is and believe that a scientist is someone they can be.

Sprouts work with scientists in authentic research projects while exploring STEM careers.

Saplings are immersed in intensive summer research and develop skills in critical thinking and reflection.

100% of students graduate high school

IN-SCHOOL

Seedlings participate in hands-on science lessons aligned with Next Generation Science Standards, learn basic functions of ecosystems, and learn how to make observations.

Sprouts build on learnings from elementary school and research our world's challenges like climate change and ocean acidification.

GROWING TREE

Age 18+
College

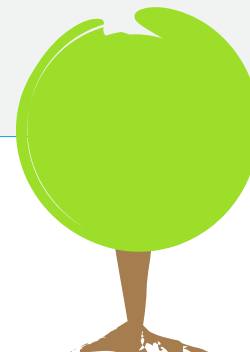


Adolescent trees are becoming first generation college graduates, with degrees in diverse STEM and conservation fields.

95% of students enroll in higher education

MATURE TREE

Age 26+
Early Career



Mature trees are diversifying the workforce, are paving the way for their family and community, and giving back through mentorship and financial contributions.

Our alumni contributed **3,763 volunteer hours** to Ocean Discovery



OUR STORIES

A LEADER IN BIOTECH SCIENCE

Our students are entering the fields of biotech, engineering, environmental consulting, fisheries, marine biology, education, and public policy. They are becoming high ranked earners, creating financial stability for themselves and their families while becoming leaders in science.

Marlem is a role model for the next generation of students coming behind her. She is a leader in the biotech industry and was part of the first team to sequence the DNA of an Atlantic bottlenose dolphin.

She became part of Ocean Discovery as a 6th grade student, and now as an Associate Scientist, she advocates for students in her community, and shares, "I realize students are waiting in City Heights, or some other neighborhood, for someone like me to tell them that college and science are paths they can take."

Her story reflects that when given the opportunity, students will unlock their potential.



OUR STORIES

AN ASPIRING PALEONTOLOGIST

Today students like Elias, a 1st grader with boundless energy, have the opportunity to participate in ocean science programs at the Living Lab. Elias regularly visits the facility after school and on the weekend with his mom and sister. His journey to becoming a leader in science and conservation has just begun.

For Elias, a typical day at the Living Lab begins as he is greeted by his friends and together they enjoy a healthy snack. It's then time to head downstairs to the Sci Tech Lab and get started with Homework Help, a studious environment where he can access computers, educational games, and a team of volunteers to provide academic support.

Elias jumps right into the next activity, Ocean Adventurers, a science lesson where he learns about ocean animals and careers in science! Elias excitedly shares, "I want to be a paleontologist!"





LIVING LAB

In October 2018, Ocean Discovery opened the Living Lab, a turning point in Ocean Discovery's history. The Living Lab is a physical demonstration of our commitment and belief in our student's ability to achieve.

The Living Lab is a state-of-the-art science education facility located in the heart of the urban community of City Heights in central San Diego. Designed by famed architect Rob Wellington Quigley, the Living Lab will achieve LEED Platinum certification and net-zero energy. A significant investment came through the San Diego Unified School District and Proposition Z, which followed our 16-year partnership to bring standards-based science education and mentoring to students both in-school and out-of-school.

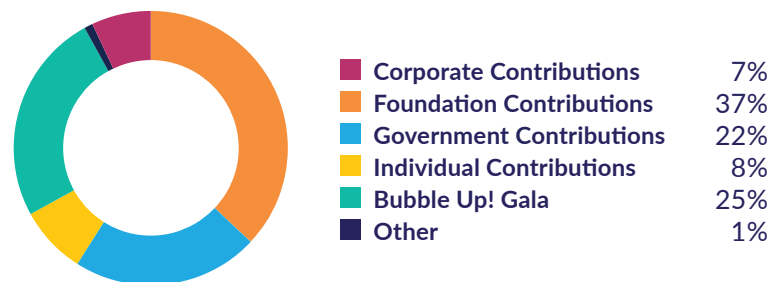
FINANCIALS |

By developing a highly diversified donor base, made up of national and local foundations, government agencies at all levels, corporations, and deeply committed individual donors, Ocean Discovery Institute is able to ensure the continued sustainability and future expansion of programming. To see the full list of Ocean Discovery Institute supporters, please visit www.OceanDiscoveryIntstitute.org/supporters.

EXPENSE CATEGORIES



REVENUE CATEGORIES



OCEAN DISCOVERY INSTITUTE FINANCIAL STATEMENT UNAUDITED HIGHLIGHTS

FY 2018

EXPENSES	■ Program Services	\$	1,605,728
	■ Management and General	\$	373,492
	■ Fundraising	\$	267,458
	Total Expenses	\$	2,246,678
REVENUES, GAINS, AND OTHER SUPPORT	■ Corporate Contributions	\$	169,401
	■ Foundation Contributions	\$	831,229
	■ Government Contributions	\$	496,101
	■ Individual Contributions	\$	189,016
	■ Bubble Up! Gala	\$	573,866
	■ Other	\$	22,319
	Total Revenues, gains, and other support	\$	2,281,932



WHAT'S AHEAD

LOCAL SCALING – *Reaching 10,000 students in our school-shed*

We will expand from serving 3,500 students to 10,000 students annually. We will expand to every K-12 classroom, a total of 14 schools, and ensure every student receives hands-on science programming, mentoring, and the tools to unlock their potential.

NATIONAL REPLICATION – *Reaching students in Norfolk, VA*

With the support of partners and investors like the National Oceanic and Atmospheric Administration (NOAA), we will continue growing to reach more students in City Heights and use lessons learned through these efforts to create sites across the United States. Starting in Norfolk, VA, we will reach students who are underrepresented in science and environmental fields and empower them to become the next generation of leaders who will make a difference in our world.





Join us in preparing the next generation of scientist, engineers, and individuals who will make a difference in our world.

You are a critical part of our success - get involved today!



GIVE

By contributing a one-time gift or reoccurring monthly gift



LEARN

By attending a weekly site tour at the Living Lab



VOLUNTEER

By contributing your time to support our students



To learn more about how to get involved visit us at
www.OceanDiscoveryInstitute.org





WHAT WILL IT TAKE?

2019

Ocean Discovery is reaching 4,000 young people with an annual operating budget of \$2.2 million. Today a contribution of \$550 supports 1 student for an entire year.

TOMORROW

Ocean Discovery is growing to reach 10,000 young people. In 2020, we are aiming to reach 2,000 new students. The great news about this is that because of what you have helped build, our costs will go down. Next year, a contribution of just \$400 will support 1 student for an entire year.

With your continued investment in Ocean Discovery, together we will empower all of the young people in City Heights to BELIEVE, ACHIEVE, and LEAD.

THANK YOU



**OCEAN
DISCOVERY**
INSTITUTE
young lives transformed through science

4255 Thorn Street
San Diego, CA 92105
619.795.8365

www.OceanDiscoveryInstitute.org

We are grateful for the contribution from The Hattie Ettinger Conservation Fund at the San Diego Foundation to support the creation of the annual report.