



**OCEAN
DISCOVERY
INSTITUTE**
young lives transformed through science

TRAINING MODULE 1: OCEAN LEADER INTRO TO RESEARCH PROGRAM OVERVIEW



OUTLINE

Ocean Discovery & Programs

Pathway of an Ocean Leader

Ocean Leader Intro to Research

Syllabus

Daily schedule

Roles & Responsibilities

Day in the life of a staff



OUR MISSION

To inspire the next generation of science leaders, Ocean Discovery Institute creates learning experiences for young people traditionally excluded from science due to race, income status, and educational opportunity. Our students will join high-paying fields, break generational poverty, and change the future of science.



WHY WE ARE UNIQUE

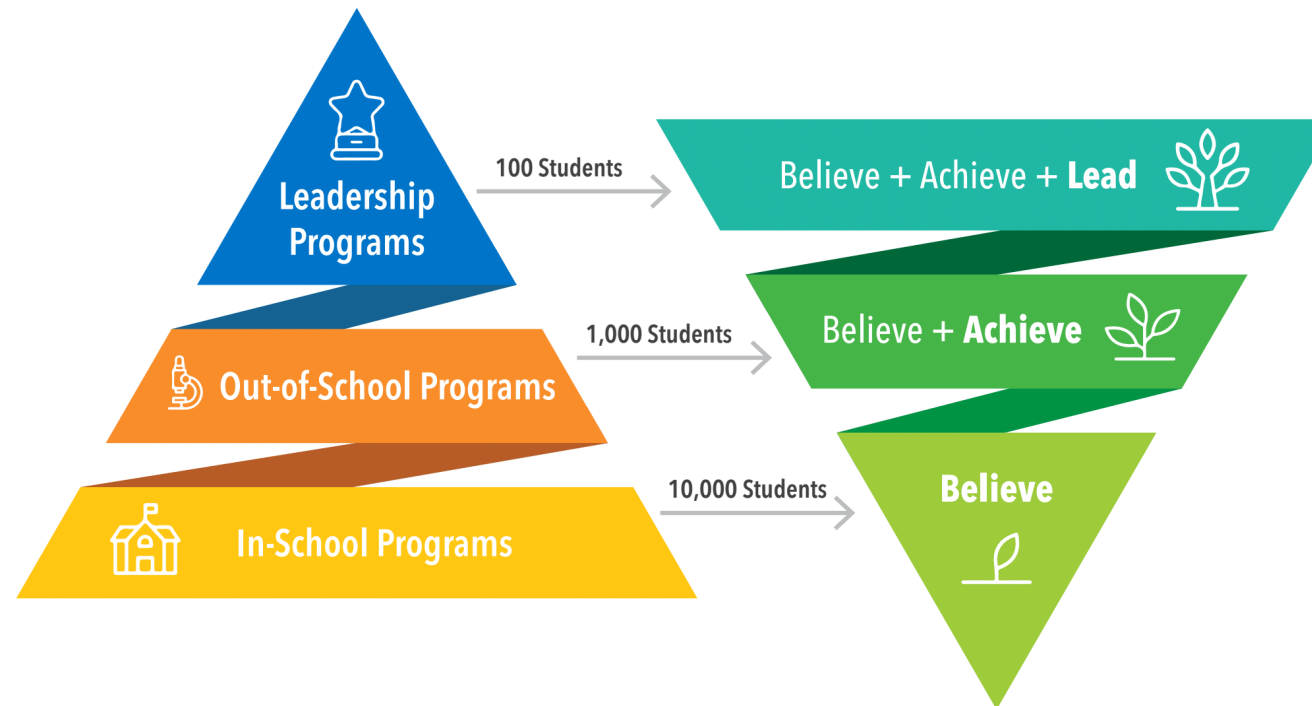


Our model:

- Reach one community at a time
- Supports students throughout their development K-career
- Provides all programming 100% tuition-free
- Uses the ocean as a platform for discovery
- Provides science experiences, mentoring, and tools for success both in-school and out-of-school



OUR PROGRAMS & IMPACT



Our program model, showing the scale of each of our 3 programs (left) and their associated goals and impacts (right).



OUR OUTCOMES

5,800 out of 10,000 students participated

In-school program participants:

- **62%** of students demonstrated belief that they can do science and become a scientist.

Out-of-school intensive leadership program participants:

- Ocean Leaders are **6 times** more likely to graduate college than their peers.
- **90%** of students graduate college within 6 years
- **77%** of these students earned science and related degrees and **42%** attained careers in these fields



OUTLINE

Ocean Discovery & Programs

Pathway of an Ocean Leader

Ocean Leader Intro to Research

Syllabus

Daily schedule

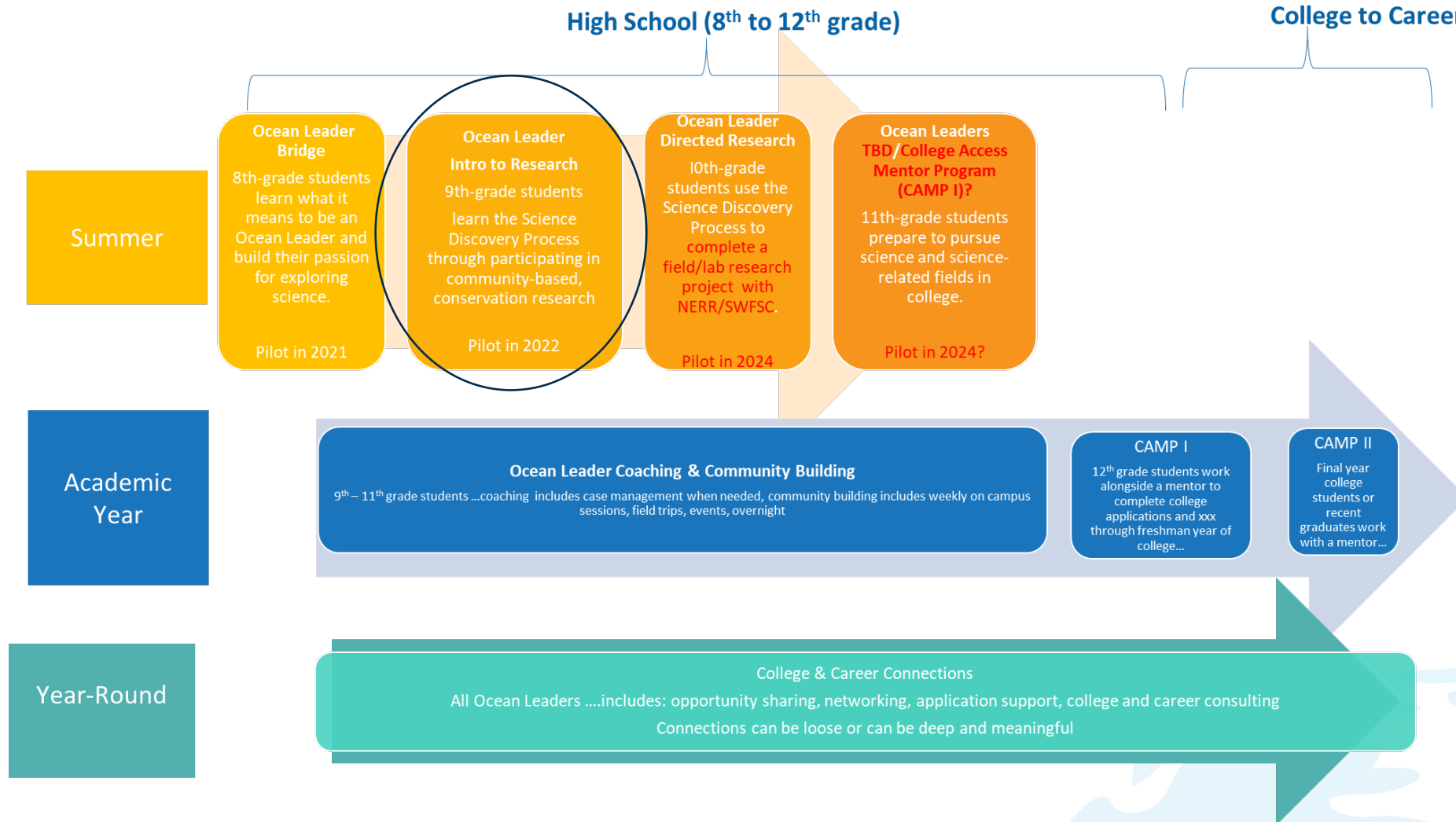
Roles & Responsibilities

Day in the life of a staff

Mentor Groups



OCEAN LEADER PATHWAY



OUTLINE

Ocean Discovery & Programs

Pathway of an Ocean Leader

Ocean Leader Intro to Research

Syllabus

Daily schedule

Roles & Responsibilities

Day in the life of a staff

Mentor Groups



OCEAN LEADER INTRO TO RESEARCH

A 12-day intensive program designed for students to experience hands-on science research in Bahía de los Angeles Mexico.

In this program, students will:

- Have daily field research experiences.
- Swim and snorkel.
- Writing and self-reflection.
- Have daily fitness and recreation.



OUTLINE

Ocean Discovery & Programs

Pathway of an Ocean Leader

Ocean Leader Intro to Research

Syllabus

Daily schedule

Roles & Responsibilities

Day in the life of a staff

Mentor Groups



PROGRAM DATES & SCHEDULE

IMPORTANT DATES



San Diego, CA

Launch Night: **July 13th**

Departure & Travel Day: **July 18th**

Travel Day & Return to San Diego: **July 31st**

Family Celebration at the Living Lab: **August 10th**

TYPICAL DAY IN BAJA



Start Time	End Time	Activity
6:00AM	6:30AM	Wake-up
6:30AM	7:15AM	Community Building
7:15 AM	12:25 PM	Field Research
12:30PM	1:00PM	Lunch
1:05PM	1:45PM	Self-Reflection
1:45PM	2:30PM	Siesta
2:30PM	3:55PM	Salud
4:00PM	6:25PM	Know it! Own it!
6:30PM	7:00PM	Dinner
7:05PM	7:35PM	Servant Leadership
7:35PM	8:30PM	Evening Activities
8:30PM	9:00PM	Sleep Prep
9:00PM	6:00AM	Sleep



SYLLABUS

Day	Date	Field Research	Evening Activity
1	Wed. 7/19	<i>Explore & Wonder</i> Program Goals & Field Station Orientation	Zumba
2	Thurs. 7/20	<i>Explore & Wonder</i> Explore the Bay	Circuit Training
3	Fri. 7/21	<i>Investigate</i> Sea-Level Rise	Zumba
4	Sat. 7/22	<i>Investigate</i> Fisheries	Circuit Training
5	Sun. 7/23	<i>Investigate</i> Whale Sharks	Zumba
6	Mon. 7/24	<i>Analyze</i> Islas	Circuit Training
7	Tues. 7/25	<i>Analyze</i> Wetlands/Sea Turtles	Sea Turtle Monitoring
8	Wed. 7/26	<i>Make a Difference</i> Recover from Double Research Day	Zumba
9	Thurs. 7/27	<i>Make a Difference</i> Birds	Circuit Training
10	Fri. 7/28	<i>Celebrate Success!</i> Celebrate!	Zumba
11	Sat. 7/29	<i>Communicate</i> Museo	Circuit Training
12	Sun 7/30	<i>Communicate</i> Community Celebration Preparation	Community Celebration



SUMMER CALENDAR

Shift #	Dates	Science Mentors	Alumni Mentors
1	Tues, 7/18 – Sun, 7/23	Science: 1. Eber Lambert 2. Thiago Lima 3. Amy Orduno-Baez Safety Officer: Name	Alumni: 1. Delia Barajas 2. Joey Tamayo 3. Irazema Islas 4. Rudy Vargas
2	Sat, 7/22 – Thurs, 7/27	Science: 1. Catalina Martinez 2. Alfonso Macias Tapia 3. Liz Drenkard Safety Officer: Name	Alumni: 1. Jose Zuniga 2. Benny Gonzalez 3. TBD
3	Weds, 7/26 – Mon, 7/31	Science: 1. Maksim Pecherskiy 2. Lisa Kim 3. Anke Kleuter Safety Officer: Name	Alumni: 1. Christian Castro 2. Richy Alvarez 3. TBD



OUTLINE

Ocean Discovery & Programs

Pathway of an Ocean Leader

Ocean Leader Intro to Research

Syllabus

Daily schedule

Roles & Responsibilities

Day in the life of a staff

Mentor Groups



WAKE UP



COMMUNITY BUILDING

Overview: Building a community of support is one of the Tools for Success. This community includes peers, program alumni, mentors, and staff who provide a safety net for burgeoning science leaders to fall back on when challenges arise and a network to access to pursue further opportunities. By offering students a safe, inclusive, and effective community in which they can take risks that no one in their family has done before, they are able to try out what it takes to become a science leader.

Goals: Community building is incorporated into all Ocean Leader programs through the below activities:

- Food & Conversation: An informal time to continue expanding their community of support through the shared experience of food and conversation. A daily question is provided.
- Community Building Activity: A structured activity designed to build students' belief that they are a unique individual and a member of the Ocean Discovery family and scientific community.
- Announcements: A time to introduce new members of the community, share the day's agenda, and upcoming opportunities.



FIELD RESEARCH



LUNCH, SELF-REFLECTION, SIESTA & SALUD



KNOW IT! OWN IT!



The late afternoon is spent reflecting on what we saw that day in the field, gaining a stronger understanding of the Science Discovery Process, and making sure we can connect what we've learned to previous knowledge.

We learn to take this new knowledge and make it our own by using study skills like flash cards and concept maps.

We also have time to ask an “expert” if we have questions or don’t understand something.



DINNER, SERVANT LEADERSHIP



EXERCISE & BEDTIME



In the evening, we experience a series of activities like Zumba, circuit training, and night snorkeling.

BEDTIME



OUTLINE

Ocean Discovery & Programs

Pathway of an Ocean Leader

Ocean Leader Intro to Research

Syllabus

Daily schedule

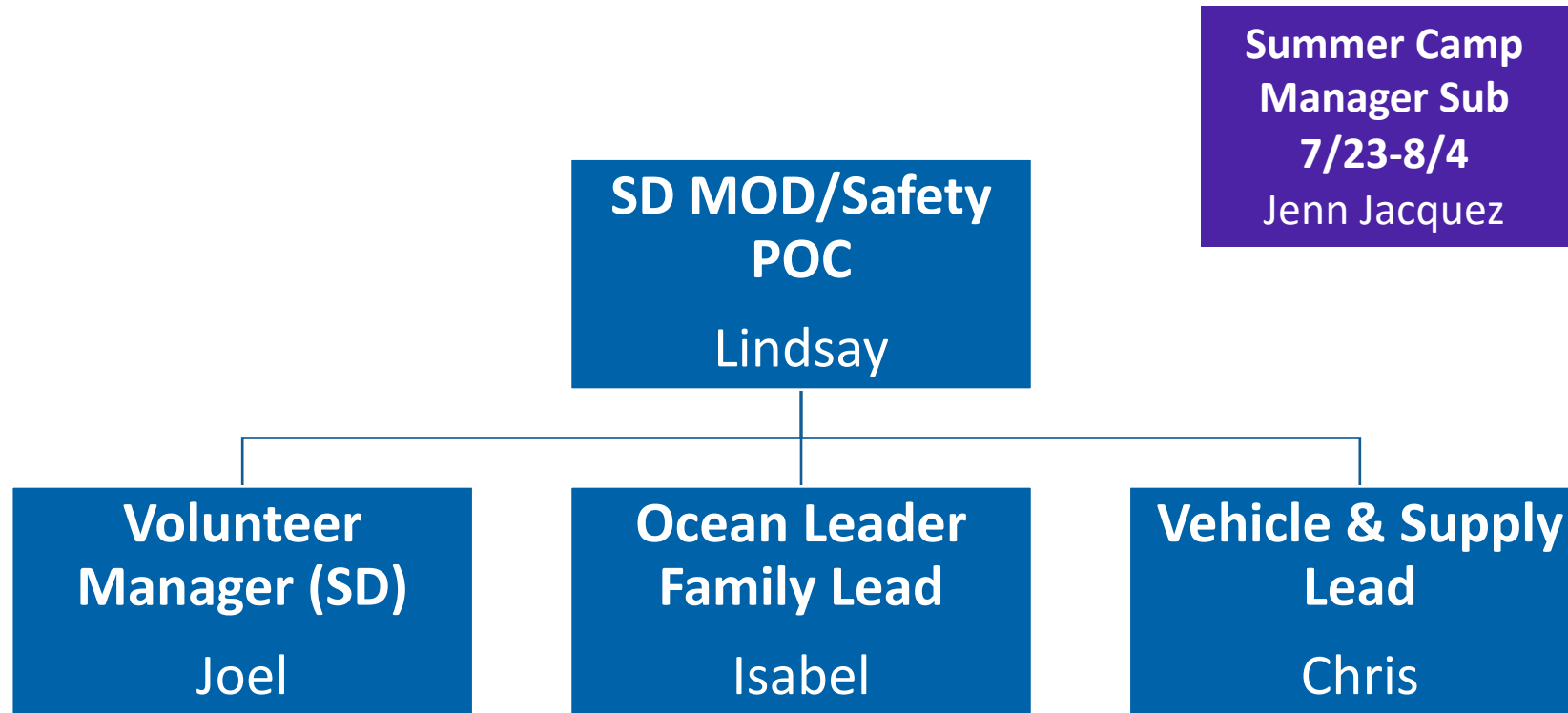
Roles & Responsibilities

Day in the life of a staff

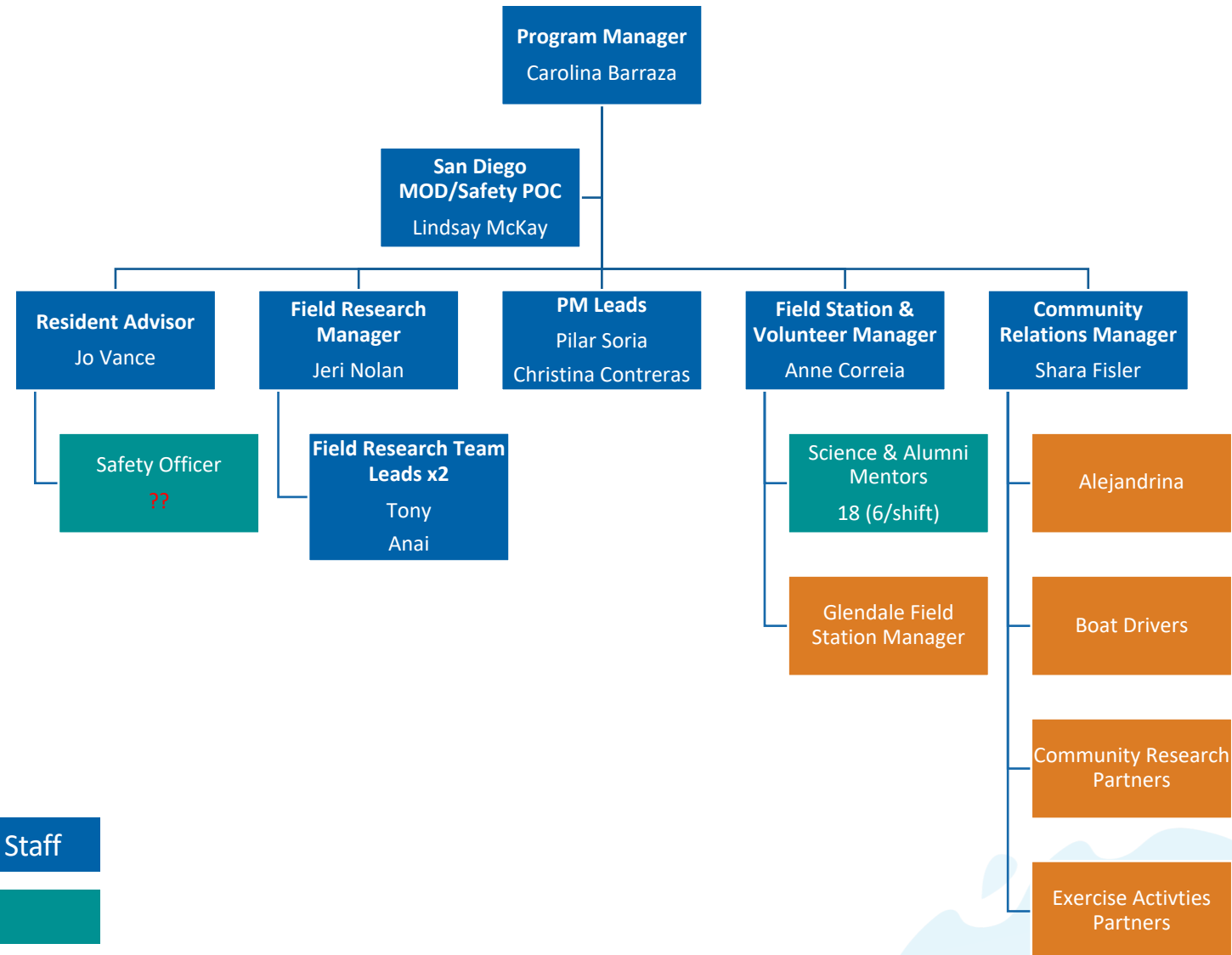
Mentor Groups



OCEAN LEADER INTRO SAN DIEGO TEAM



OCEAN LEADER INTRO TO RESEARCH - BLA



Ocean Discovery Staff

Volunteer

External Contractor



OCEAN DISCOVERY INSTITUTE
young lives transformed through science



DAY IN THE LIFE OF A STAFF

F	G	H	I	
Activity	Description	Lead Staff	Participating Staff & Volunteers	Notes
Wake Up	NA	Jo		
Breakfast and Community Building Activity	See Morning Announcements Board if unable to eat breakfast with the group.	Carolina	All Staff	
Field Research	Sea-Level Rise	Tony	Anai, Pilar, Shara, SO, Jo, Anne	10 am- 11:30 am Need 3 ext
Lunch	NA	Carolina	All Staff	
Self-Reflection	NA	Jo		
Team Lead Check-in and Prep	Daily meeting to review curriculum and pack	Jeri	Tony, Anai	
Siesta	NA	Christina	Pilar	
Salud	NA	Pilar	Christina, Jo	Land-based
Know it! Own it!	NA	Jeri	Tony, Science Mentors	
Dinner	NA	Carolina	All Staff	
Servant Leadership	Servant Leadership Protocol	Christina	Pilar	
Evening Activities	Zumba with Celeste	Pilar	Christina	
Sleep prep	NA	Christina	Pilar	
Sleep	NA	Christina	Anne, Carolina	

WHAT'S NEXT?

Live Training!

- Know it and Own it!
You are responsible for knowing all information on [Action Items 1 to 4 on the Ocean Leader Intro to Research Staff Training Portal.](#)
- Come with any questions.





**OCEAN
DISCOVERY
INSTITUTE**
young lives transformed through science

THANK YOU!!

