



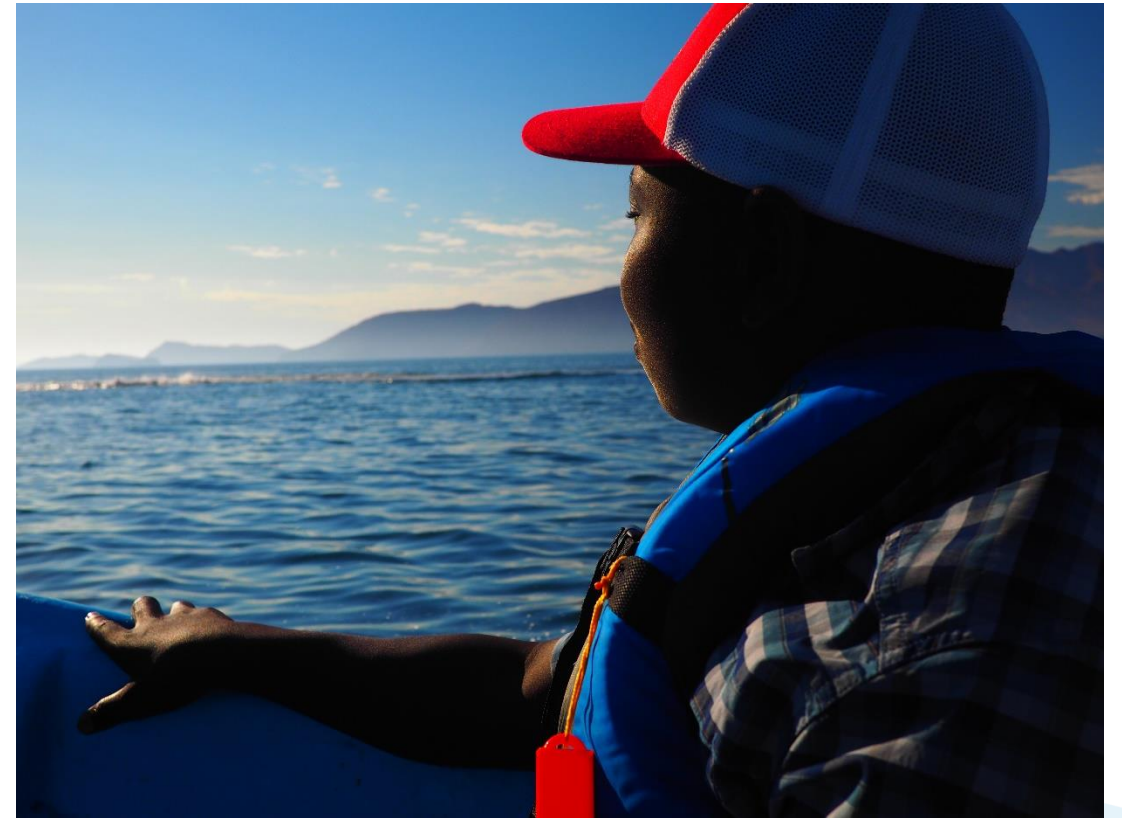
## OL INTRO TO RESEARCH MODULE 4: HEALTH & SAFETY TRAINING



# AGENDA

---

- ☐ Overview
- ☐ Roles & Responsibilities
- ☐ Tools
- ☐ COVID 19 Updates



---

# OVERVIEW

---



# OVERVIEW

---

**To prepare for emergencies and hazards with the goals of:**

- ☐ Protecting ourselves, our students, and other individuals in our care from hazards or threats
- ☐ Limiting injury and damage due to emergencies
- ☐ Quickly returning to normal operations following an emergency



# SUMMER CONTEXT

---

## What is our schedule?

- ☐ 7/18 - 7/31
- ☐ Residential

## Who will be onsite?

- ☐ MOD: Carolina (alt. Anne, Shara, Jo)
- ☐ Safety Officer
- ☐ Staff
- ☐ Students
- ☐ Science and Alumni Mentors
- ☐ Field Station Manager
- ☐ Cook: Alejandrina
- ☐ Occasional visitors

## ASC Considerations - BLA vs San Diego?

- ☐ The average temp is 95°F high and 75°F low
- ☐ Internet access but no cell service
- ☐ The local clinic, no hospital
- ☐ 350 miles from US medical care



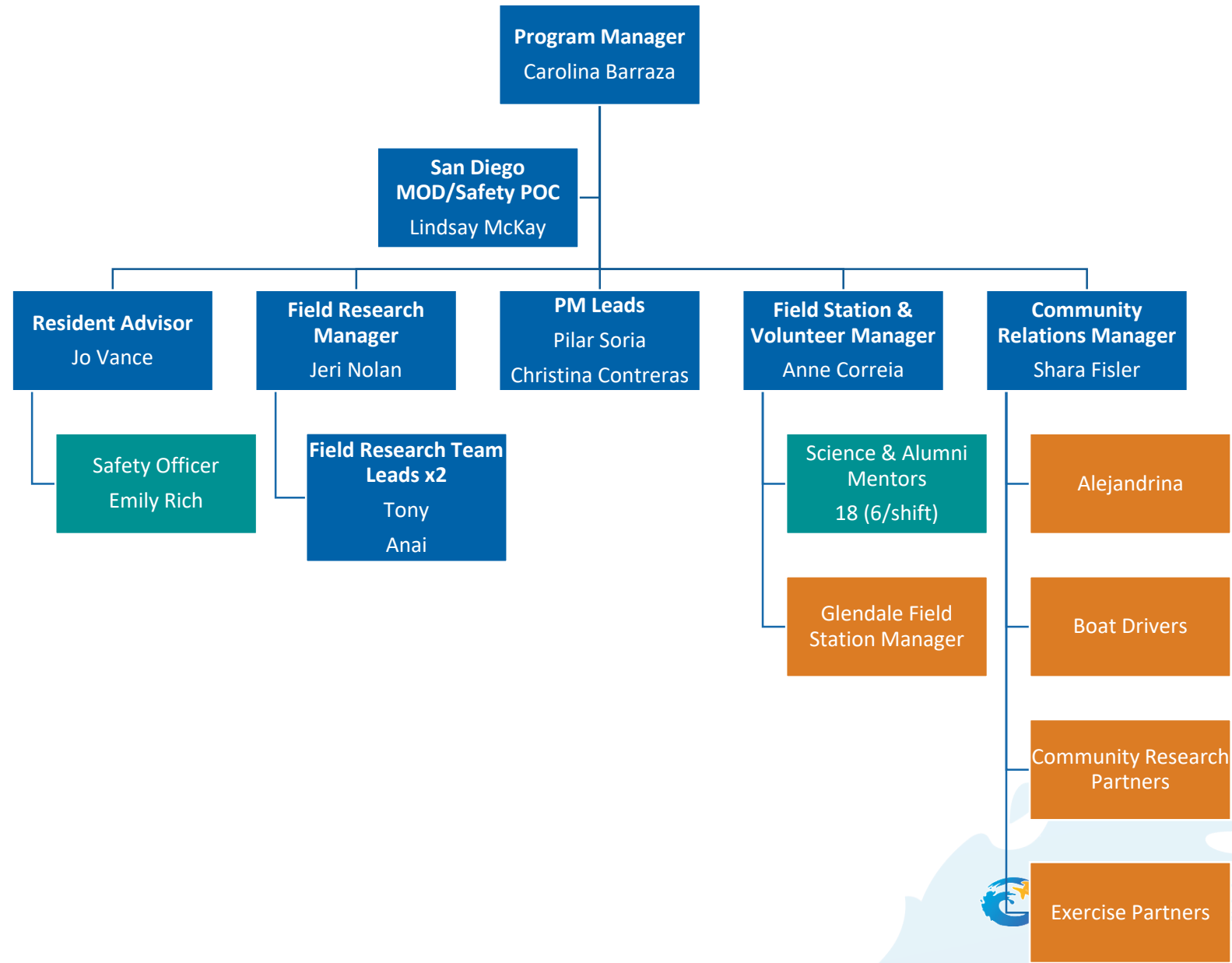
---

# ROLES & RESPONSIBILITIES

---



# ROLES & RESPONSIBILITIES



---

# TOOLS

---





# MOD

Certain staff plays the role of MOD while in Bahía de los Ángeles. Our Program Manager plays the primary role with other Full-Time staff that can come in as alternates.

MOD and MOD alternates will review the “Emergency Preparedness Reading BLA MOD” on the portal.

## TOOLS FOR MOD (CAROLINA, JO, SHARA, ANNE)

### Emergency Preparedness Reading BLA MOD.

A few notes:

*The contents of this reading will be in the Emergency Response Binder and available for your use while in BLA.*

*Read the first two sections (pages 1-29); these are the same as all BLA Staff reading.*

*For the remainder of the reading, review and familiarize yourself with the information, resources, and procedures so that you may activate them as needed in an emergency.*



# ALL STAFF

---

All Staff are responsible for the Health and Safety of our community and program in BLA.  
Read the following tools on the portal.

## TOOLS FOR ALL STAFF

**COVID-19 Residential Program Prevention Plan 2022.** During the live training, we will provide clarification and answer questions.

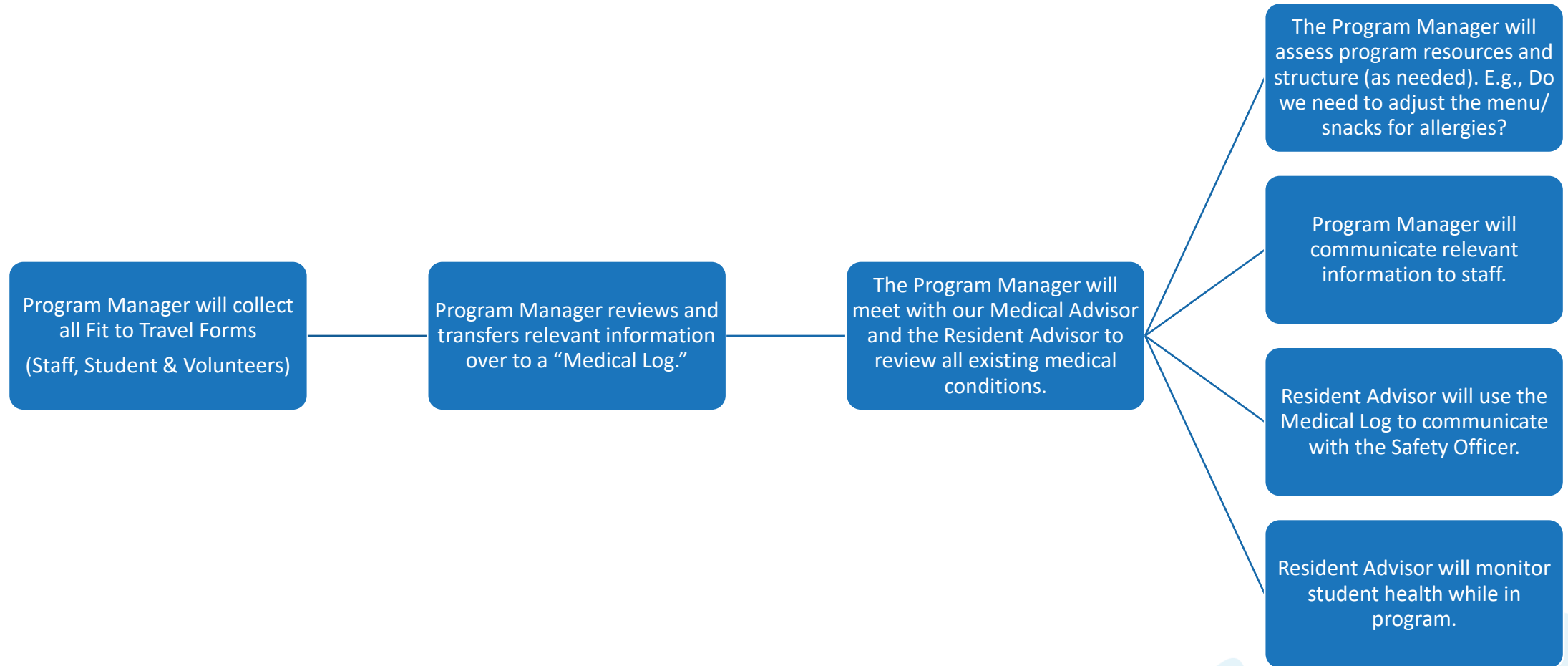
**Emergency Preparedness Reading BLA Staff** Complete this before the live training. During the live training, we will have a review quiz on key concepts and discuss scenarios.

Water Safety Training **Coming Soon!**

Vehicle Safety Training



# WHAT HAPPENS WITH YOUR FIT TO TRAVEL?



# STUDENT INFO

STUDENT	DOB	ALLERGIES/MEDICAL	PASSPORT/PAPERWORK
Diego Aguilar	6/29/2008		NOT COMPLETE (passport)
Belen Alonso	5/21/2008		Complete
Katherine Avila Mejia	1/16/2007	Grass – gets rash	Complete
Alexandra Castillo	11/2/2007		Complete
David Lazaro (M)	5/18/2007	Known rashes (laser surgery in July 3), non contagious	Complete
Cesar Gonzalez	11/28/2007		Complete
Tatyanna Leonard (M)	3/14/2007		Complete
Jasmine Roman	4/3/2007		Complete
Mia Serna Lozano	2/25/2008		Complete

# STUDENT INFO

STUDENT	DOB	ALLERGIES/MEDICAL	PASSPORT/PAPERWORK
Javier Sotelo	5/16/2007		Complete
Brian Soto	6/25/2008	Eye Glasses	Complete
Sherly Torres Navarijo	4/17/2008		Complete
Anthony Zapata	3/4/2008	Boat/Car Nausea Eye Glasses	Complete
Carlos Beltran	6/9/2007		Complete
Brandon Gadea (M)	5/4/2007	Peaches, Asthma	Complete
Dannia Maravilla (M)			Complete



# EPIPENS & STUDENT MEDICATION

## Field Station

Personal EpiPens stay on the person.

RA secures the Ocean Discovery EpiPens.

RA secures, monitors and administers prescription medicine.

## Field

Field Trip Lead will have EpiPens in the Field Gear Bag. Personal EpiPens stay on the person.

Field Trip Lead will pack student medication in the Field Gear Bag, and that student will be assigned to their boat.

\*At the end of the field day, the Field Trip Lead will return all EpiPens and medication to the RA. They will again collect them in the morning, when they pack and prep for the day.



# SNAKES

---

## Accountability

- ☐ Assign staff to maintain visual of snake.

## Safety

- ☐ Ensure everyone is a minimum of 10 feet away from snake.
- ☐ Have staff remove students from the area.
- ☐ Alert those trained in rattlesnake abatement – Anne, Jo, Brian.
- ☐ Rattlesnake trained staff will:
  - ☐ Use grabber to hold the snake.
  - ☐ Use shovel to cut off the head.
  - ☐ Put snake in bucket – using care as snake may still react for several minutes.
  - ☐ Dispose of snake.

## Communication

- ☐ Notify Manager on Duty.



---

# COVID 19 UPDATES

---





# COVID 19

---

## COVID-19 Prevention Measures Pre-Travel Checklist

- ☐ Screening and Checking for Signs & Symptoms
- ☐ Handwashing
- ☐ Cleaning & Disinfection
- ☐ Ventilation
- ☐ Isolation, Contact Tracing, Quarantine
  
- ☐ Other Considerations
  - ☐ Minimize your risk before departure
  - ☐ On-call US doctor will support in decision-making and case management





**OCEAN  
DISCOVERY  
INSTITUTE**  
*young lives transformed through science*

**THANK YOU.**  
[oceandiscoveryinstitute.org](http://oceandiscoveryinstitute.org)

